

Model: FI8903W/FI8904W/FI8905W

**Water-proof Wireless / Wired
IP Camera**

User Manual



FI8903W



FI8903W



FI8904W



FI8904W



FI8905W



FI8905W

CONTENTS

1 WELCOME	2
1.1 Features.....	2
1.2 Packing List.....	3
1.3 Product views.....	3
1.4 Preparations before use.....	4
2 SOFTWARE OPERATION.....	7
2.1 IP Camera Tool	7
2.2 Camera Login	11
2.3 Device Status	15
2.4 For Visitor.....	16
2.5 For Operator.....	17
2.6 For Administrator.....	18
3 How to do settings in For Administrator.....	20
3.1 Alias Settings	20
3.2 Date & Time Settings	20
3.3 User Settings	21
3.4 Multi-Device Settings	22
3.5 Basic Network Settings.....	26
3.6 Wireless LAN Settings	28
3.7 ADSL Settings	28
3.8 UPnP Settings.....	28
3.9 DDNS Service Settings.....	28
3.10 Mail Service Settings	29
3.11 MSN Settings	30
3.12 FTP Service Settings	31
3.13 Alarm Service Settings.....	33
3.14 Upgrade Device Firmware	35
3.15 Backup & Restore Settings.....	35
3.16 Restore Factory Settings	36
3.17Reboot Device	36
3.18 Log	36
3.19 Back	36

4 APPENDIX..... 37

4.1 Frequently Asked Questions37

4.2 Default Parameters40

4.3 Specifications40

5 OBTAINING TECHNICAL SUPPORT 42

1 WELCOME

IPCAM is an integrated wireless IP Camera solution. It combines a high quality digital video Camera with network connectivity and a powerful web server to bring clear to your desktop from anywhere on your local network or over the Internet.

The basic function of IPCAM is transmitting remote video on the IP network. The high quality video image can be transmitted with 30fps speed on the LAN/WAN by using MJPEG hardware compression technology.

The IPCAM is based on the TCP/IP standard. There is a WEB server inside which could support Internet Explore. Therefore the management and maintenance of your device become more simply by using network to achieve the remote configuration, start-up and upgrade firmware.

You can use this IPCAM to monitor some special places such as your home and your office. Also controlling the IPCAM and managing image are simple by clicking the website through the network.

1.1 Features

- Powerful high-speed video protocol processor
- High Definition Color CMOS Sensor
- 300K Pixels
- IR night vision (03 Range:10m; 04 Range:20m; 05 Range:30m;)
- Optimized MJPEG video compression for transmission
- Multi-level users' management and passwords definition
- Embedded Web Server for users to visit by IE
- Wi-Fi compliant with wireless standards IEEE 802.11b/g
- Supporting Dynamic IP (DDNS) and UPnP LAN and Internet (ADSL,Cable Modem)
- Giving alarm in cause of motion detection
- Supporting image snapshot
- Support multiple network protocols: HTTP/TCP/IP/UDP/STMP/DDNS/SNTP/DHCP/FTP
- Support WEP/WPA/WPA2 encryption
- Support Daylight Saving Time
- Support MSN
- Support Gmail

1.2 Packing List

Untie the pack and check the items contained against the following list:

- IPCAM×1
- Wi-Fi Antenna×1 (only available for wireless model)
- DC Power Supply×1
- Quick Installation Guide×1
- CD×1 (Include IPCAM user manual、IP camera tool)
- Network Cable×1
- Mounting bracket×1(option)

NOTE: Please Contact us immediately in the case of any damaged or short of contents.

1.3 Product views

1.3.1 Front View



Figure 1.1

Infrared LED: 18IR LEDs(model 03)/24 IR LEDs (model 04)/60 IR LEDs (model 05)

LENS: CMOS sensor with fixed focus lens

WIFI Antenna: Wireless Antenna

1.3.2 Back View

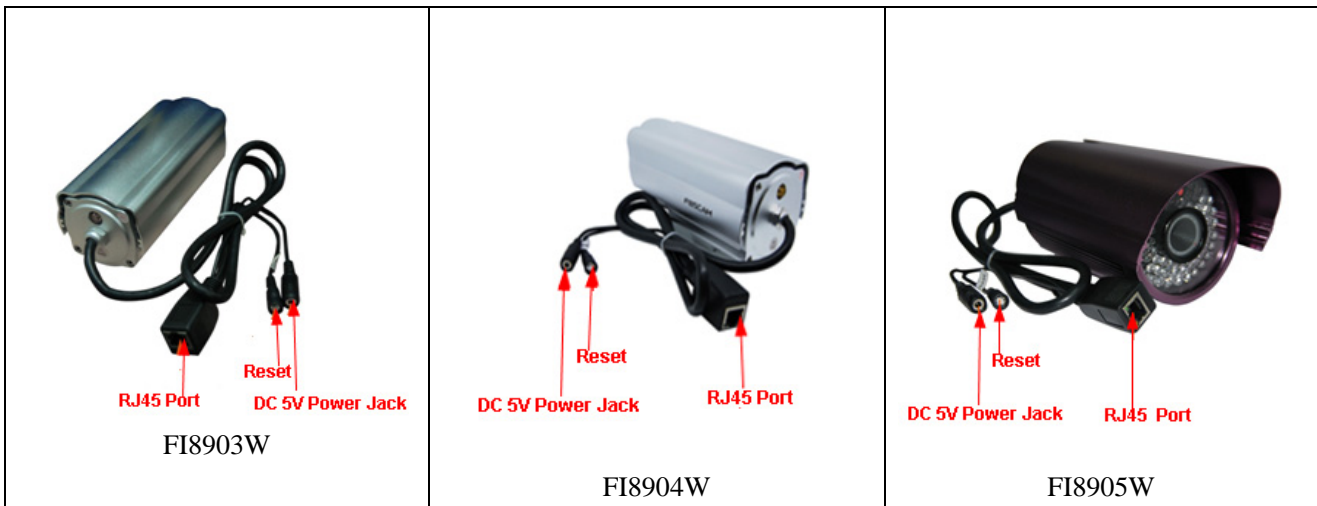


Figure 1.2

LAN: RJ-45/10-100 Base T

Power: DC 5V/2A Power supply

RESET BUTTON: Press and hold down the RESET BUTTON for 5 seconds. Release the power button and IP camera will be reset back to the factory default parameter.

1.3.3 Bottom View

There are three stickers at the bottom of the camera; it is the important feature of original Foscama cameras. If your camera does not have these three stickers, it may be a clone one. Clone Foscama cameras could not use original firmware and obtain our good after service.

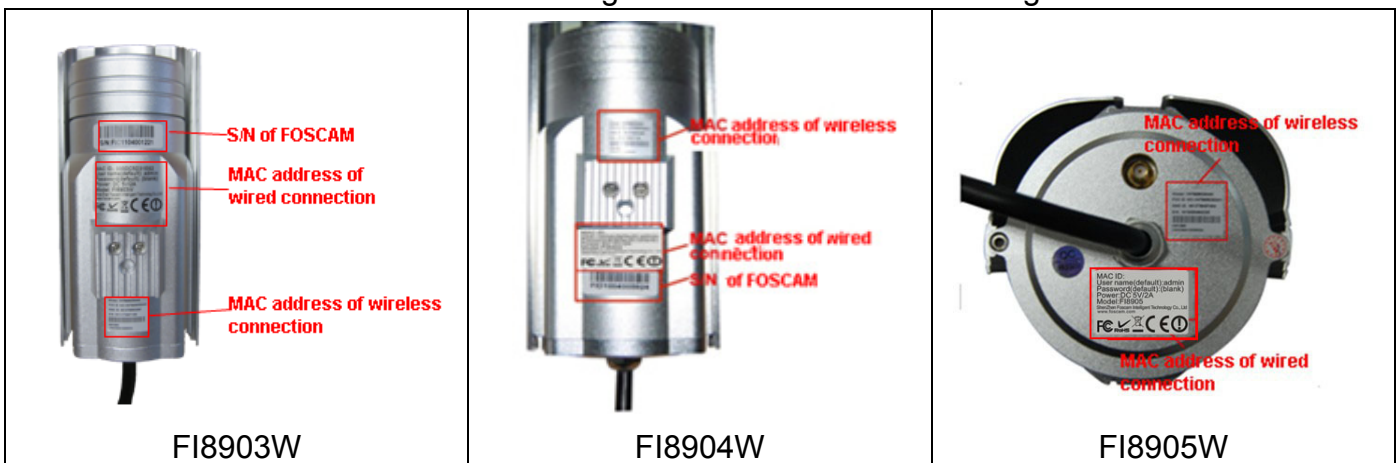


Figure 1.3

1.4 Preparations before use

1.4.1 Software installation

(1) Put the small CD in the CD driver of your computer. Open the CD; find the software as instruction;

(2) Double click **IPCamSetup.exe** and install the software as instruction.



Figure 1.4

(3) Only click **Next**, you will complete the software installation.

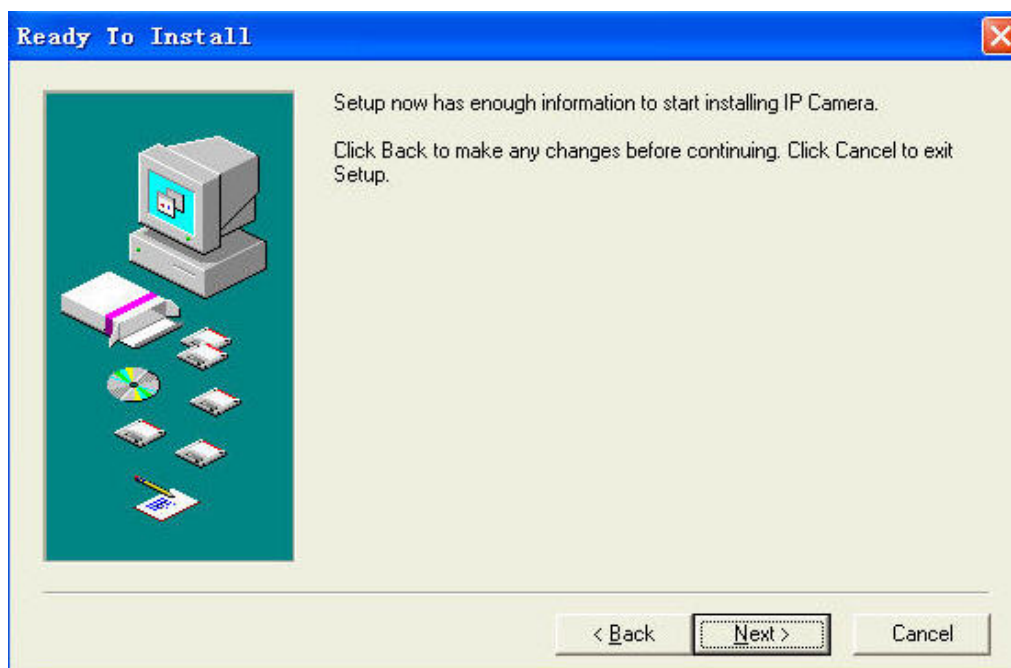


Figure 1.5

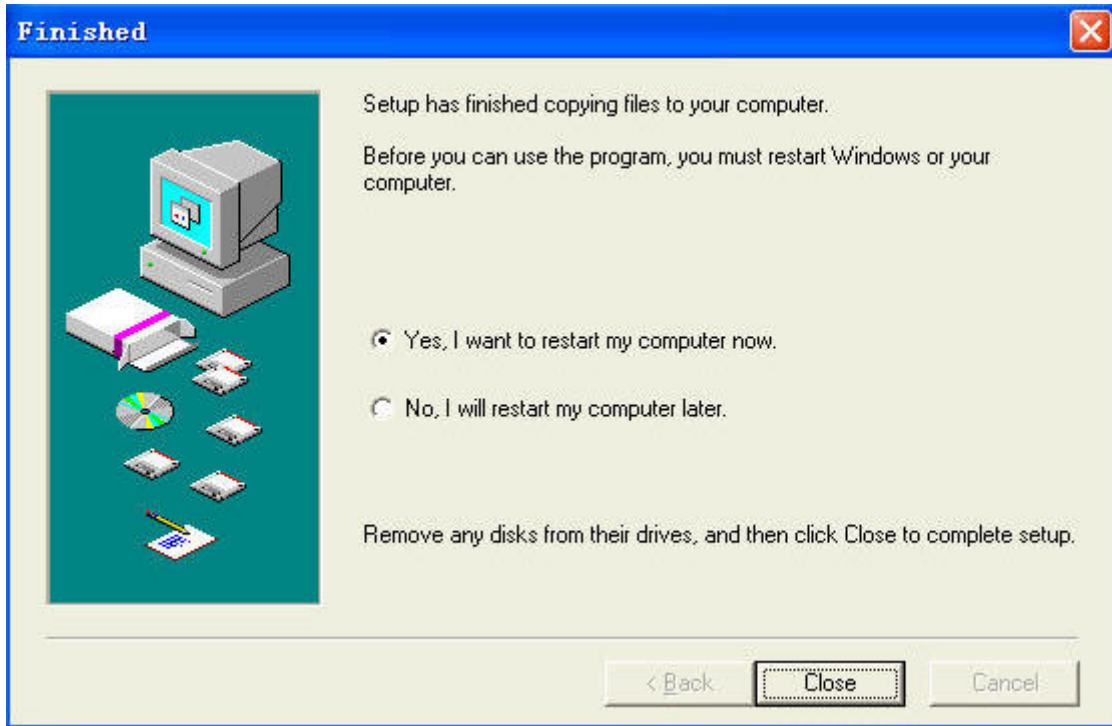



Figure 1.6



The computer restarts upon installation completion and an icon  appears on the desktop automatically.

NOTE: If you use Windows7 and could not find the icon on desktop after install the IP camera tool, please check if the path of the camera port to is correct.

For example, as it was pointing to C:\Windows\System32\IPCamera.exe. Please fix this by pointing the shortcut to the correct path C:\indows\SysWOW64\IPCamera.exe. After this you could use the shortcut without any problems.

CAUTION: Before installing and using the product, please read the following precautions carefully and make sure they are fully understood. Use only the power adapter attached with the product. Use unauthorized power adapter may cause damage to your IP Camera. IP Camera terminal shall be installed in an indoor environment where the rain or snow could not pour it.

1.4.2 Hardware preparation

Follow the steps below to set up your camera hardware connections. Make sure to follow each step carefully to ensure that the camera operates properly.

- (1) Fix the antenna at the back of the camera.
- (2) Plug the network cable into the camera and then into your Cable/DSL router.
- (3) Plug the power adapter into the camera and then into the power outlet.

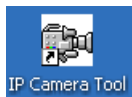
CAUTION: Make sure to only use the power adapter supplied with IPCAM. Using a non-approved power adapter may damage the camera.

- (4) The camera takes approximately 30 seconds to start up before it displays an IP address on the **IP Camera Tool** (details: [2.1](#))
- (5) When the camera is powered and network cable plugged correctly. The small green light (network jack) will turn on and the small yellow light will flash. The network light will blink. (about 1~2 times per second) The power light will turn on too.

2 SOFTWARE OPERATION

2.1 IP Camera Tool

When the Device has been mounted properly, you can double click the icon “IP Camera Tool”



and a dialog box as Figure 2.1 will pop up.

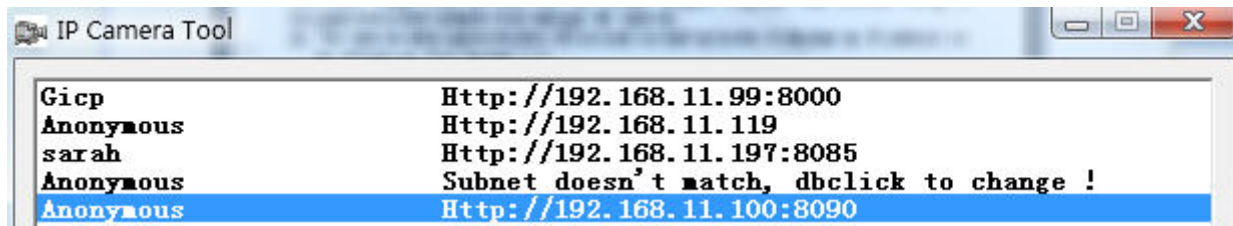


Figure 2.1

The software searches IPcam automatically over LAN.

There are 3 cases:

- (1) If no Camera in LAN. After about 1 minute search, the Result Field will show “not found IP Server” and the program shut automatically.
- (2) If IP Cameras having been installed within LAN. All the IP Cameras will be listed and the total number is displayed in the result field as shown in Figure 2.1.
- (3) The IP Cameras installed within LAN do not share the same subnet with the monitoring PC. A prompt as shown in result field (prompt: **Subnet doesn't match, dbclick to change!**). Click the left mouse button to choose the prompt and click the right mouse, choose **Network Configuration** to set the IP address of the Camera to the same subnet as LAN. (Figure 2.5) You can choose obtain IP from DHCP server or set a static IP for the camera. (Figure 2.4)

NOTE: If you could not find the camera's IP on the IP camera tool. Please check if DHCP is enabled in your router, or disable MAC address filter. Make sure that firewall doesn't block the camera.

Six Options

Choose the IP Camera list and Click right mouse button; there are six options, Basic Properties, Network Configuration, Upgrade Firmware, Refresh Camera List, Flush Arp Buffer and About IP Camera Tool as shown Figure 2.2.

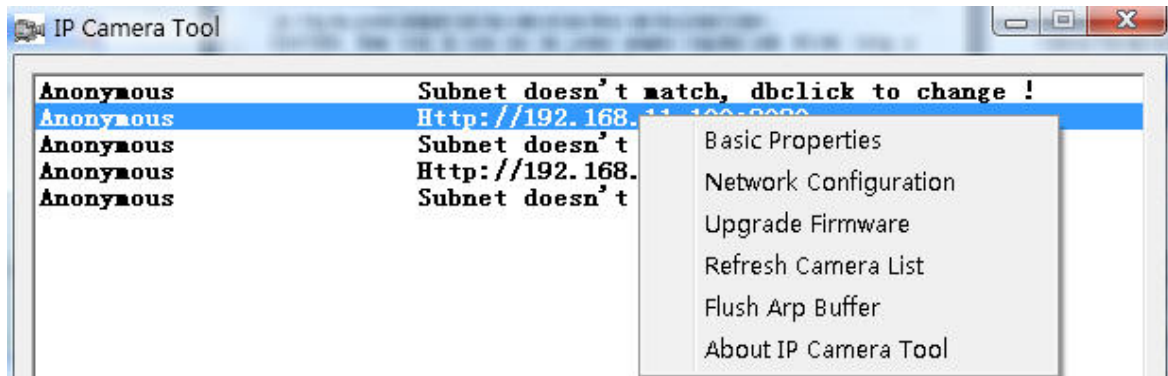


Figure 2.2

● **Basic Properties**

There are some devices' information in the Basic Properties, such as **Device ID**, **System Firmware Version**, and **Web UI Version**. (Figure 2.3)

If there are several cameras on the list, you can choose basic properties to check the device ID and recognize the IP address belong to which camera you set up, such as Device ID is 00606E8C5058, you can find the same MAC ID sticker at the bottom/back of the camera.

Each camera has its only MAC ID. Sometimes, if you couldn't find the camera's IP on the IP Camera Tool. Maybe the firewall block it, you can add this MAC ID to your router and give it a fixed IP or add the MAC ID as a trusted site. There are two MAC addresses, one is Wired MAC and the other is WIFI MAC.

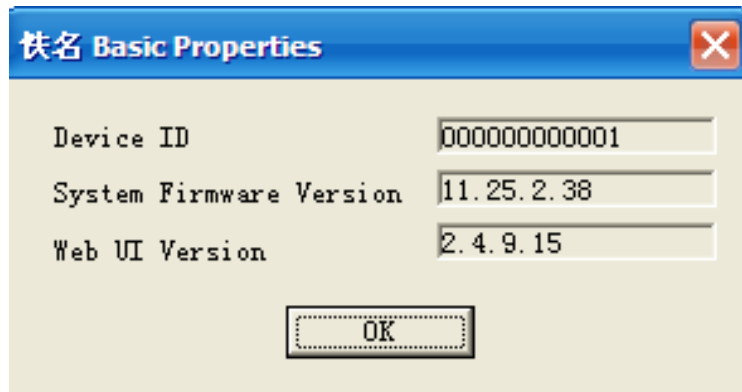


Figure 2.3

● **Network Configuration**

In this page, you can configure the Network parameters.

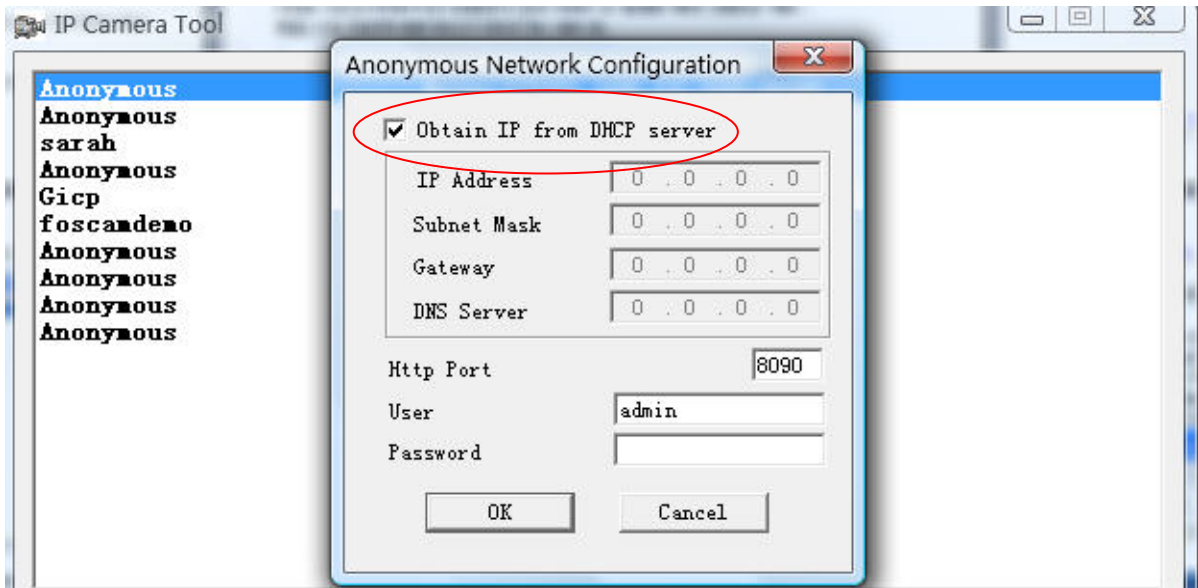


Figure 2.4

Obtain IP from DHCP server: If checked, the device will obtain IP from DHCP server. In other words, the camera will have a dynamic IP. (Make sure the Router which the camera connects has DHCP function and DHCP is enabled).

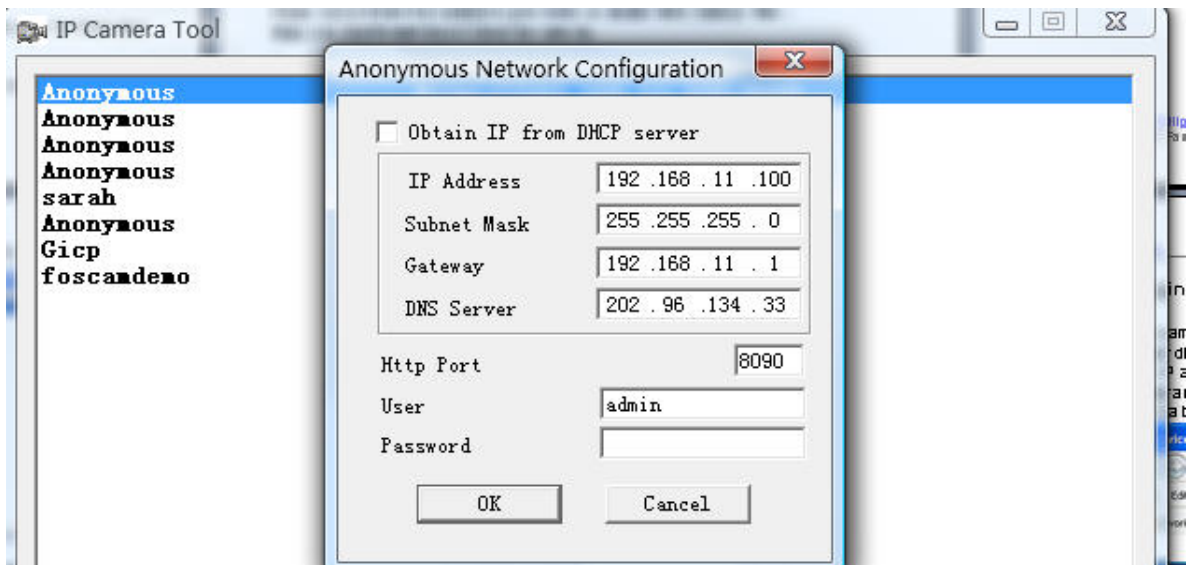


Figure 2.5

IP Address: Fill in the IP address assigned and make sure it is in the same subnet as your computer or router. (the first three sections are the same)

Subnet Mask: The default subnet mask of the equipment in our LAN is: 255.255.255.0. You can find the subnet mask in the basic information of your router or the locally-attached of your PC.

Gateway: Make sure it is in the same subnet with PC's IP address. Here gateway is your router's LAN IP.

DNS Server: IP address of ISP network provider. You can find the DNS server in your router or check the locally-attached of your computer. Locally-attached of PC contains your PC's IP address, gateway and DNS server. Normally, there are two DNS servers. Here you can also set the DNS server the same with gateway.

Http Port: The default lan port is 80. You can set another port number, such as port 8005, 85, 8100.etc.

User: Default administrator user name is admin

Password: Default password is blank, no password.

NOTE: If the prompt “Subnet doesn’t match, dbclick to change!” appeared, please enable DHCP and choose obtain IP from DHCP server or set camera’s IP address and gateway once again.

● **Upgrade Firmware**

Enter the correct User and Password to upgrade system Firmware and Web UI. If you upgrade the camera, Please **upgrade system firmware** first and then **upgrade web UI**. Or it may damage the camera.

Please download the firmware package under the correct type of your camera before upgrade. Follow the upgrade document in the package carefully to upgrade. Please look readme first before you upgrade.

CAUTION: Please don’t upgrade the firmware freely. Sometimes, your camera may be damaged if operate wrong during upgrade. If your camera works well with the current firmware, we recommend you’d better not upgrade it.

NOTE: If you download the firmware. Please check if bytes of the two .bin file are exactly the same with the size in readme. If it fits, you can upgrade it. If not, please download the firmware again until the bytes are exactly the same with the official size. Otherwise, your camera would be crashed by the firmware which loose frame.

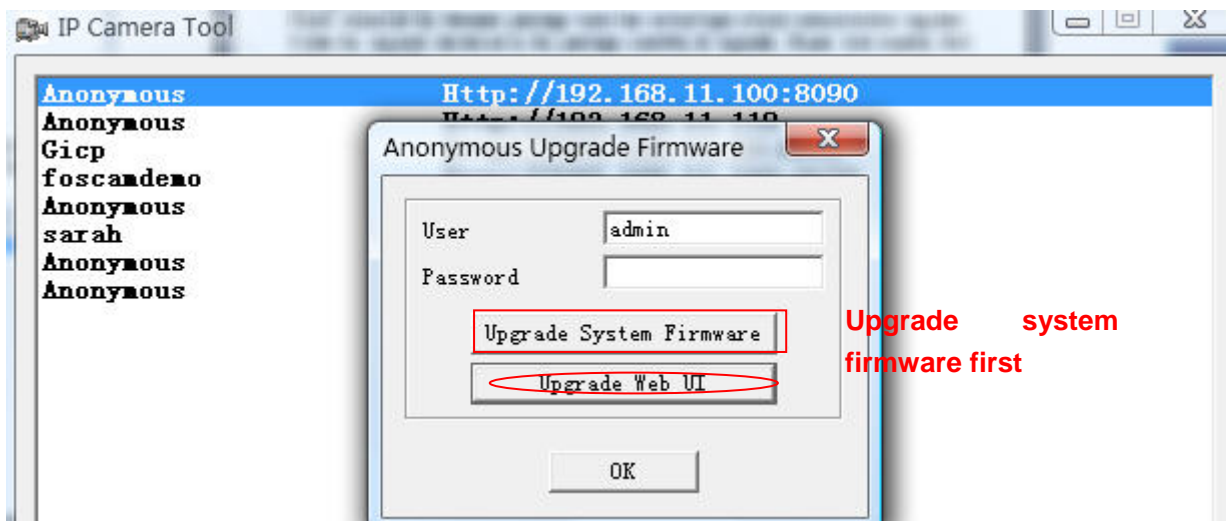


Figure 2.6

● **Refresh Camera List**

Refresh camera list manually.

● **Flush Arp Buffer**

When wired and wireless of the camera both are fixed IP address. There is a problem you may encounter is can search the camera IP but can’t open the camera webpage. You may try to use flush Arp buffer.

● **About IP Camera Tool**

Choose here and you can see the version of the IP Camera Tool.

2.2 Camera Login

You can access the camera through **IP Camera Tool** or **IE, Firefox, Google chrome, safari or other stand browser** directly.

(1) Double click the IP address of the IP Camera listed (Figure 2.1).The browser you use will be opened automatically and display the camera login page. (Figure 2.8)

(2) Access the camera by IE browser directly, type in the camera's IP address. For example:

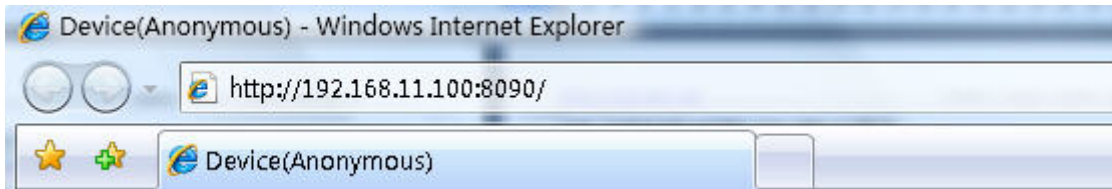


Figure 2.7



Figure 2.8

The default user is admin, no password.

There are two modes to login. If you use IE browser, please choose activeX mode to login. If you use Firefox or Google chrome, please choose server push mode to login. (Figure 2.9)

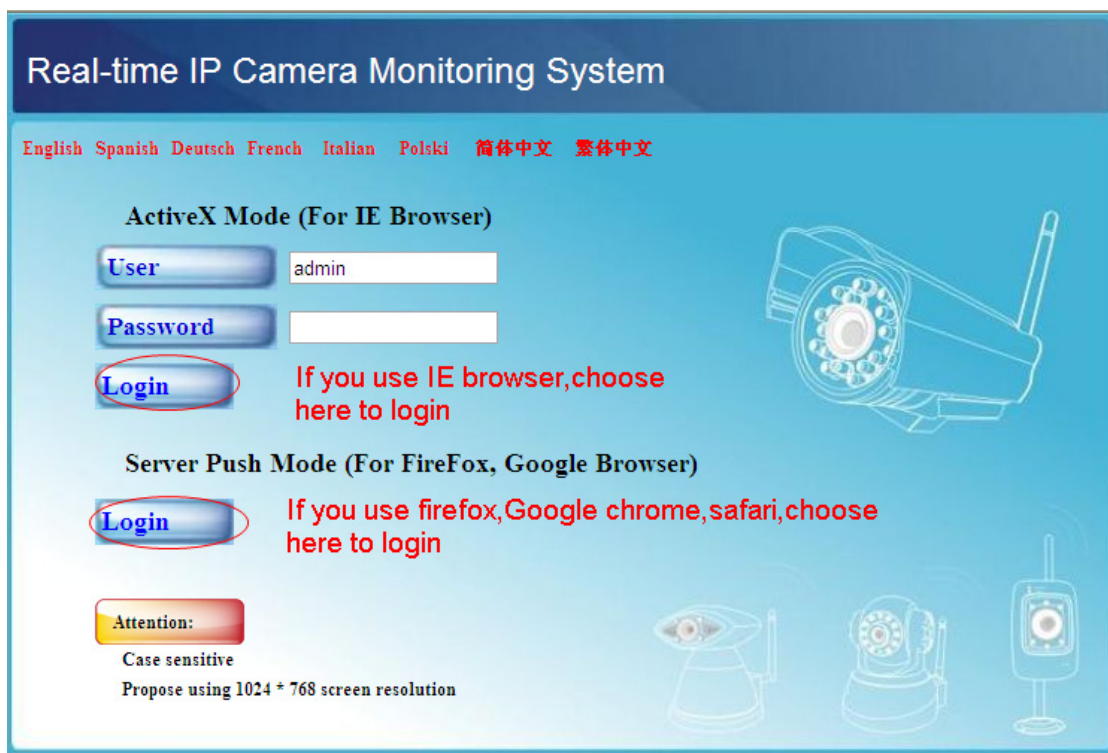


Figure 2.9

For IE browser

Fill in user name and choose the first login.

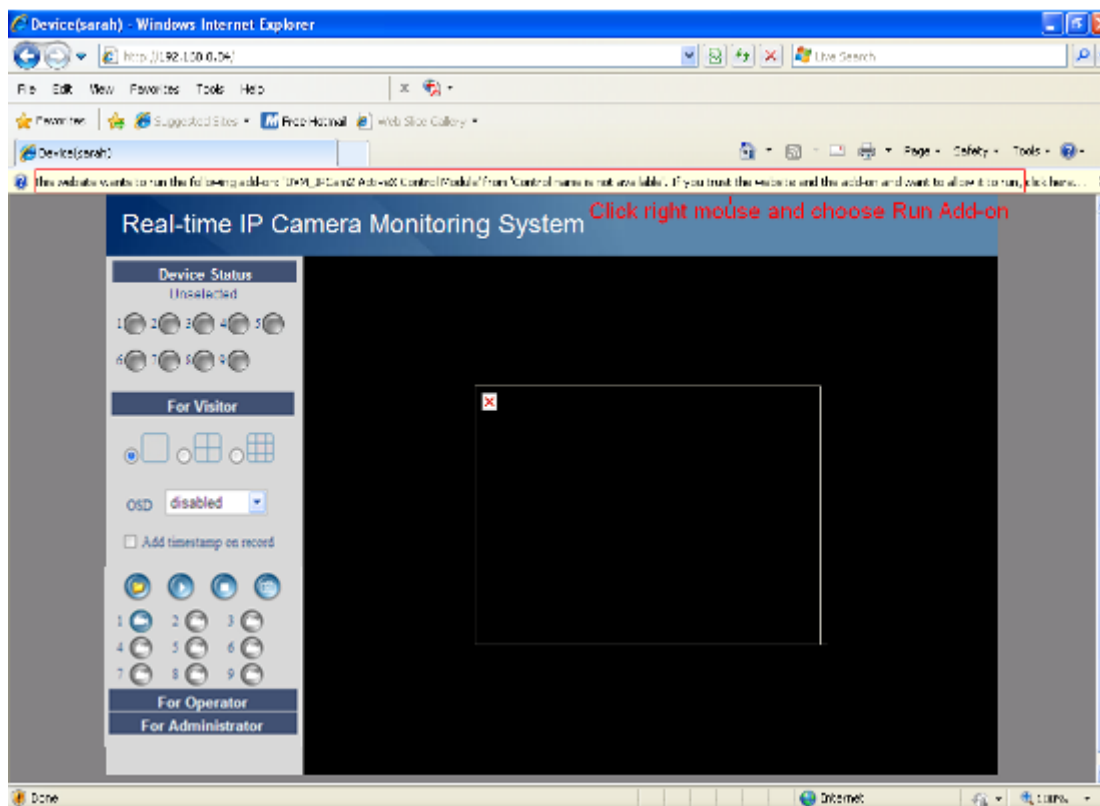


Figure 2.10

The first time you login the UI. You will meet activeX prompt like the picture above. (Figure 2.10) Please click right button on the information and choose **Run Add-on**.

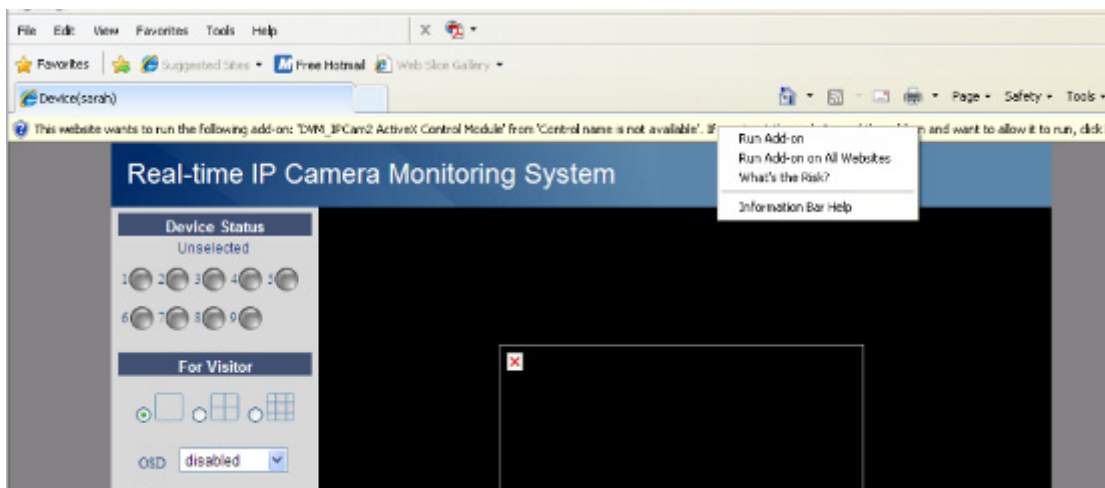


Figure 2.11

You will see the picture below (Figure 2.12). Click **Run** and it will return to the login interface. Fill in the user name and choose login again. You will see living video. (Figure 2.13)

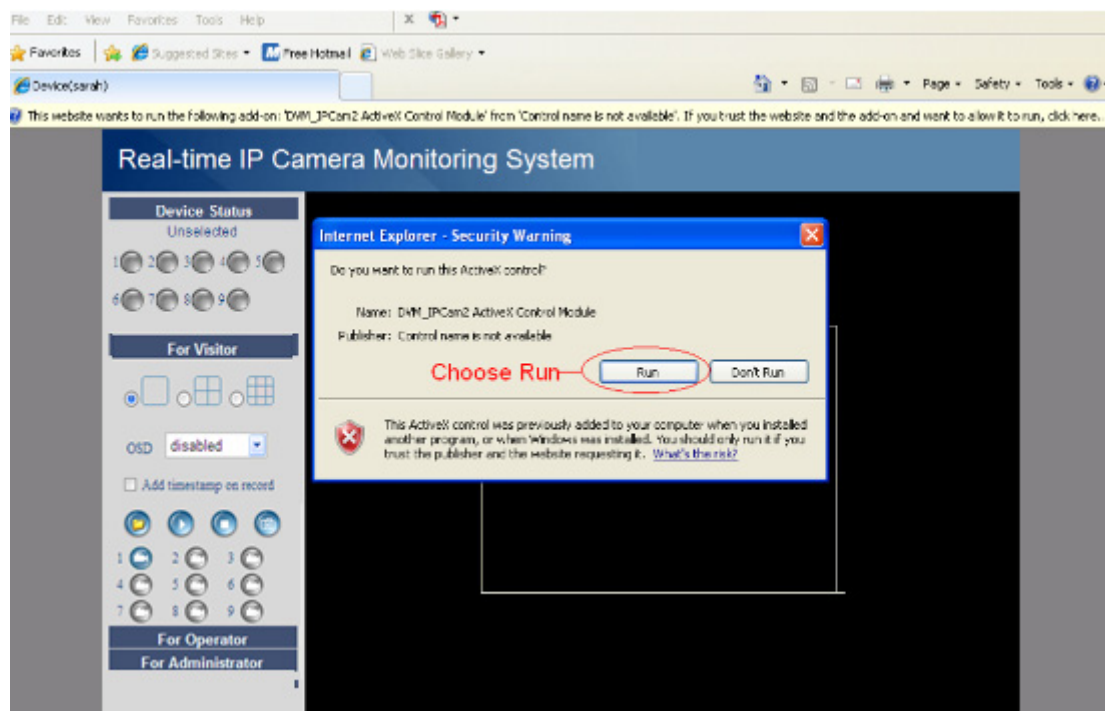


Figure 2.12

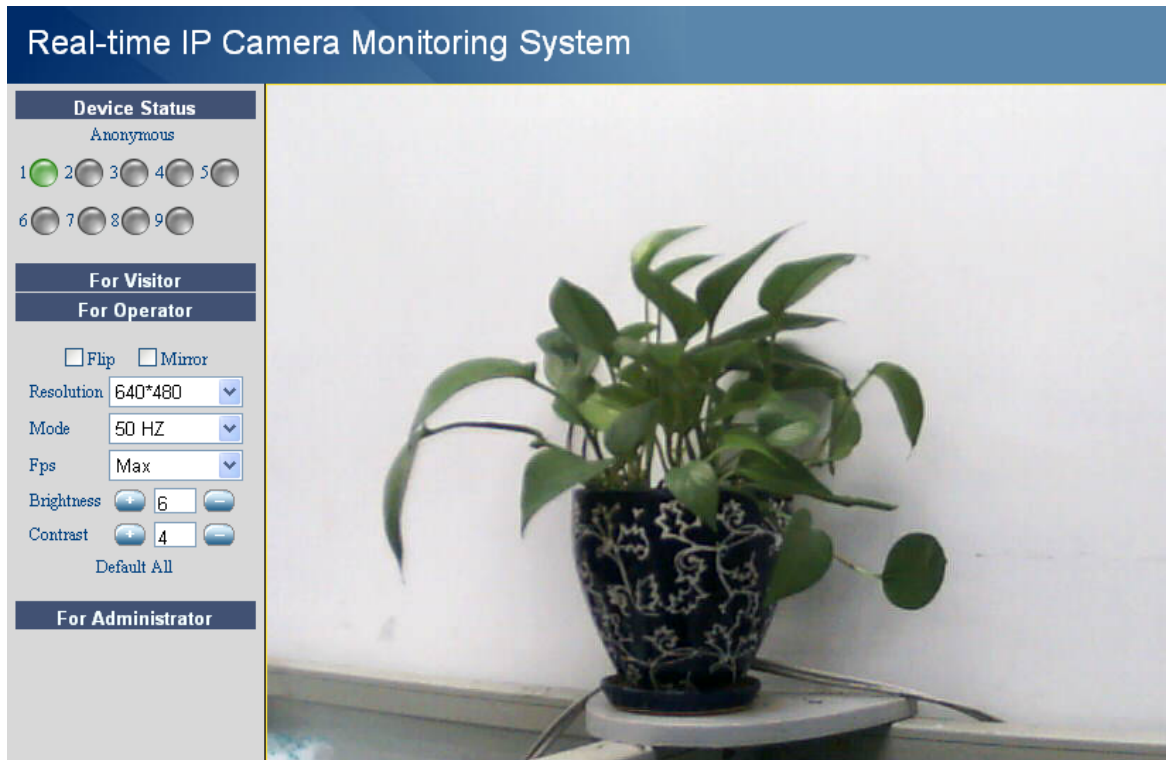



Figure 2.13

NOTE: If you could not view living video after run the activeX. Only a red cross  in the center of the video or just a black screen. Please change another port number to try. Don't use port 80. Use port 85, 8005 or 8100 to try.

Make sure that firewall or antivirus software on your computer does not block the activeX. If you could not run the activeX as the way above, please shut down the firewall or antivirus to try again.

For Firefox, Google chrome, safari or other standard browser.

Fill in user name and choose the second login mode to login.

It may ask you for user name and password again before you login the UI.

After you enter user name, you will see **Device Status** of the camera.

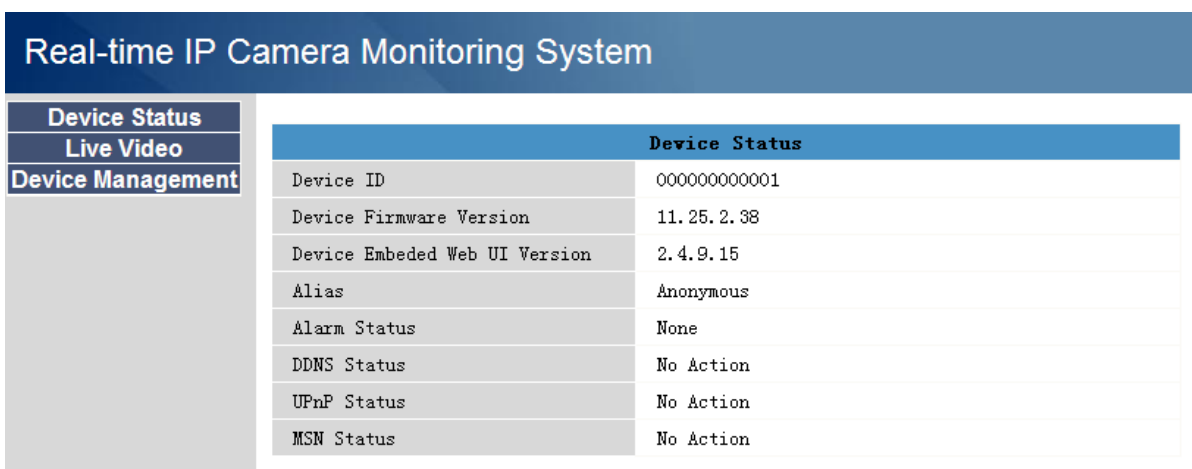


Figure 2.14

Click **Live Video**, you will see living video.

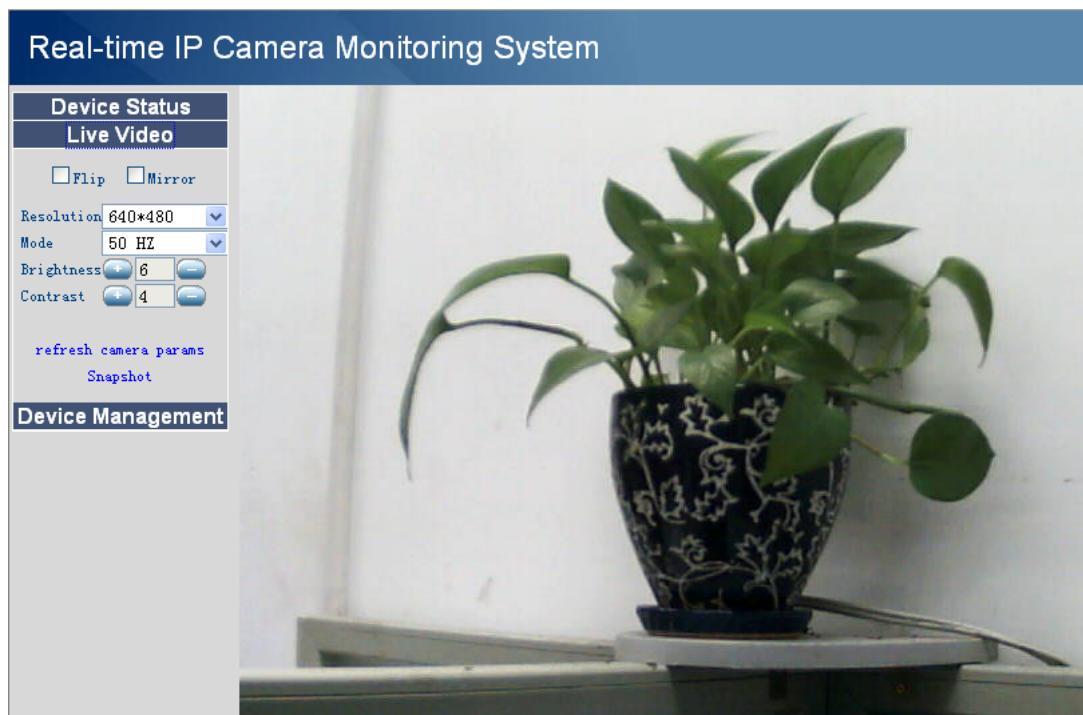


Figure 2.15

2.3 Device Status

For IE browser

If the camera is well connected. The light of the device status will show green. Or it will show yellow. If it shows yellow, please check if the activeX is enabled or change another port number to try again.

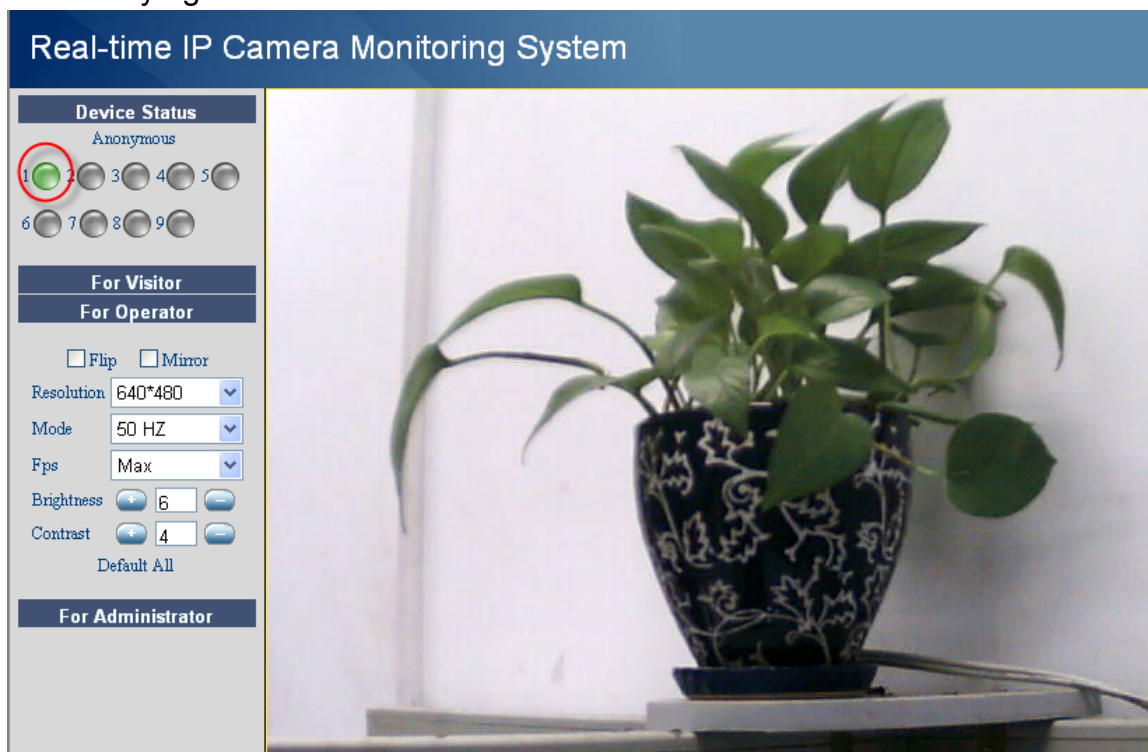


Figure 2.16

If you want to view device information. Choose **For Administrator** and then click **Device info**.

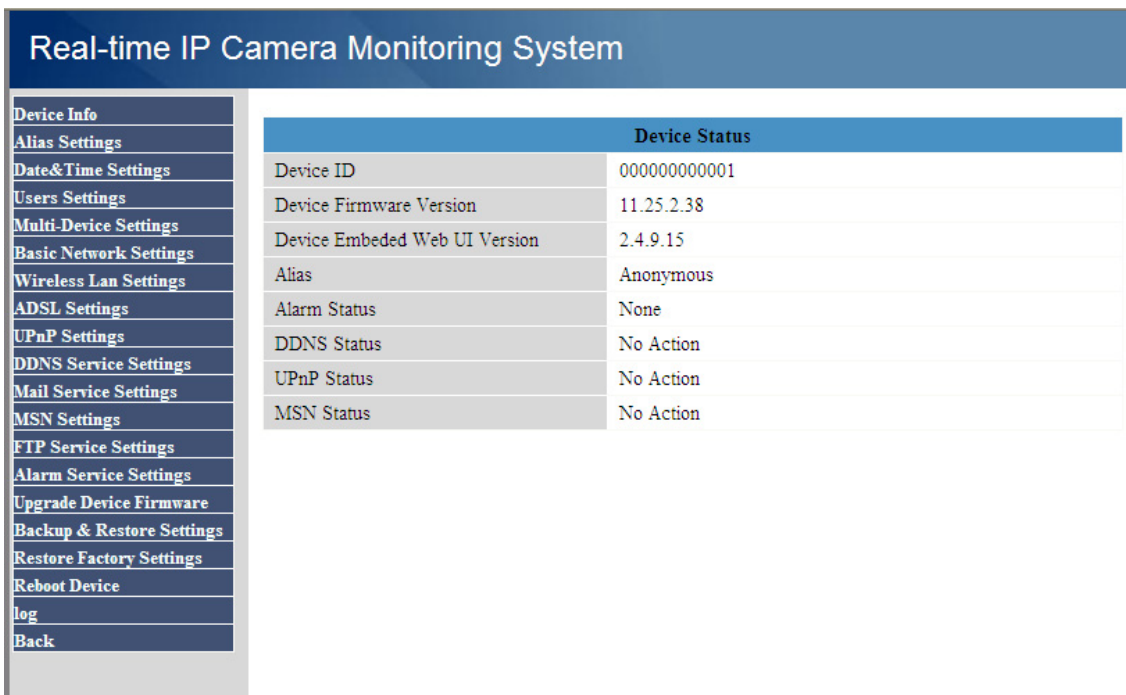


Figure 2.17

For Firefox, Google chrome and safari

When you login the UI. You will see Device Status which is same like Device Info in IE browser. (Figure 2.14)

2.4 For Visitor

For IE browser

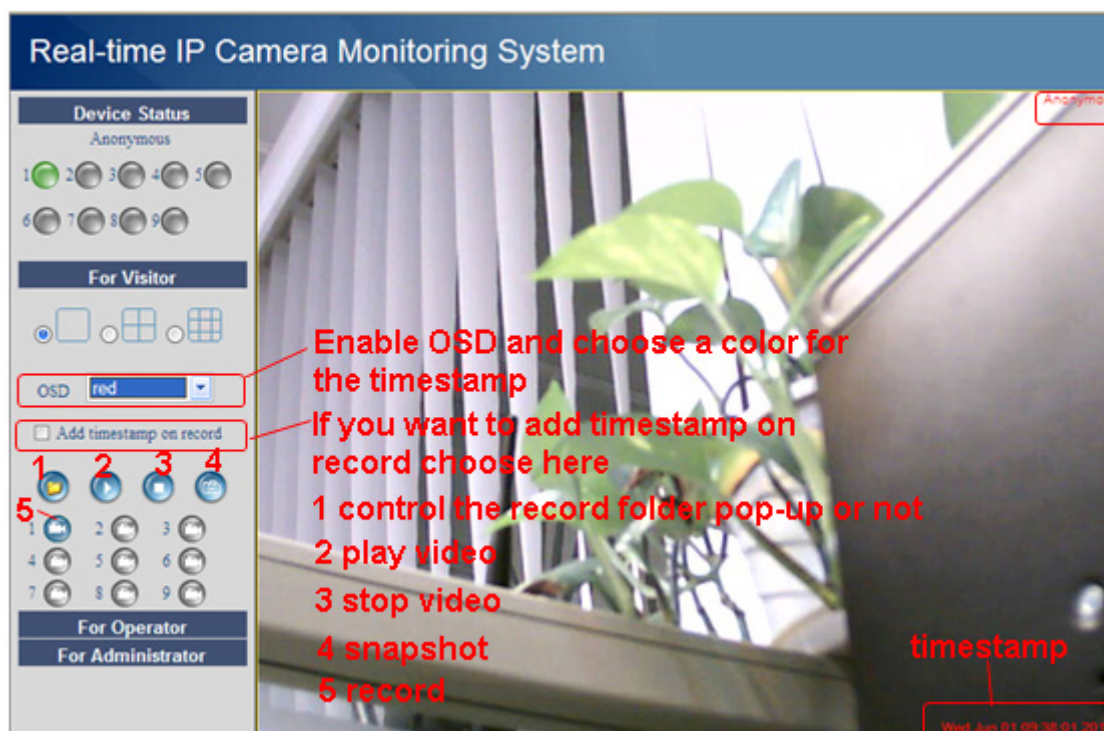




Figure 2.18


Multi-device window: The firmware inside the camera supports max 9 cameras monitoring at the same time. You can add the other cameras in multi-device settings.


OSD: OSD is used to add timestamp on the video. There are five colors for the characters.


Add timestamp on record: If you wan to add timestamp on record, choose the checkbox.

: When you enable motion alarm, camera will record automatically and store the recording file to the folder you set. This icon is used to control the folder pop-up automatically or not.

: When you click the icon, the camera video will play.

: this icon is control camera stop.

: Click this icon to snap the picture.

: Click the record icon. The camera will begin recording and store the .avi file to the folder you set. (Figure 3.3) Click again it will stop.

For Firefox, Google chrome and safari

You will see the picture like Figure 2.14 when you login the camera as visitor.

2.5 For Operator

For IE browser

Click for operator. You will see the following picture. (Figure 2.19)

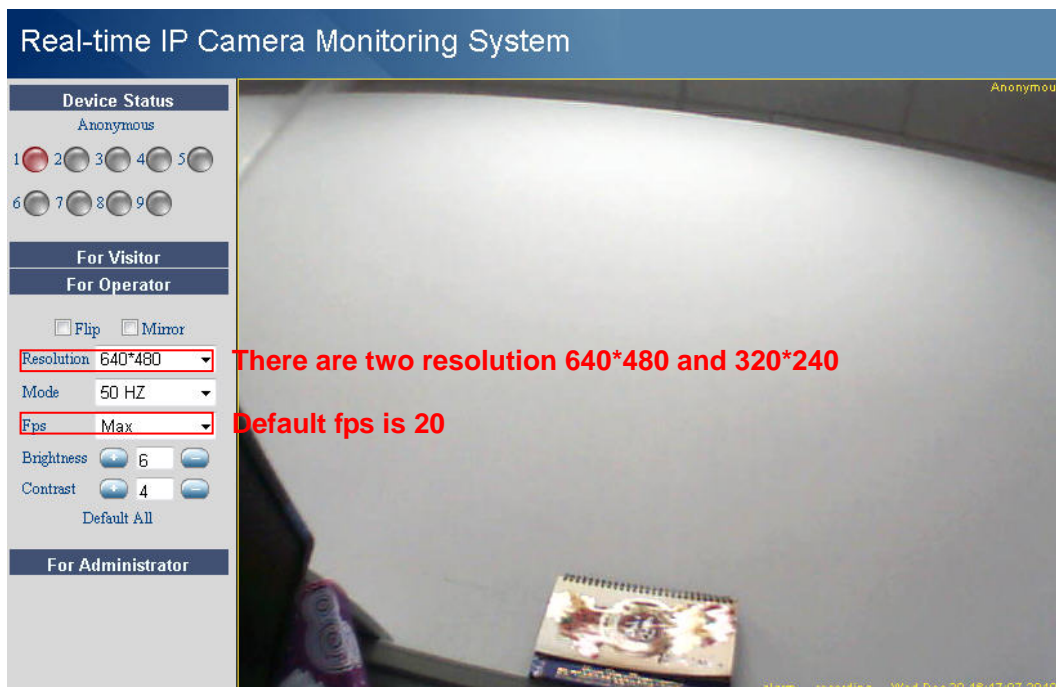


Figure 2.19

Flip & Mirror: You can choose flip or mirror if you set up the camera in a special position.

Mode: There are three modes. (50HZ, 60HZ and outdoor)

Brightness and **Contrast** are also used to adjust the quality of the video.

For Firefox, Google chrome and safari

Click **Live Video**. You can see the difference from IE and Firefox.

In IE, there is a button for default all the settings. In Firefox, the snapshot button is under for operator. Add the other two function; refresh video and refresh parameters. (Figure 2.20)

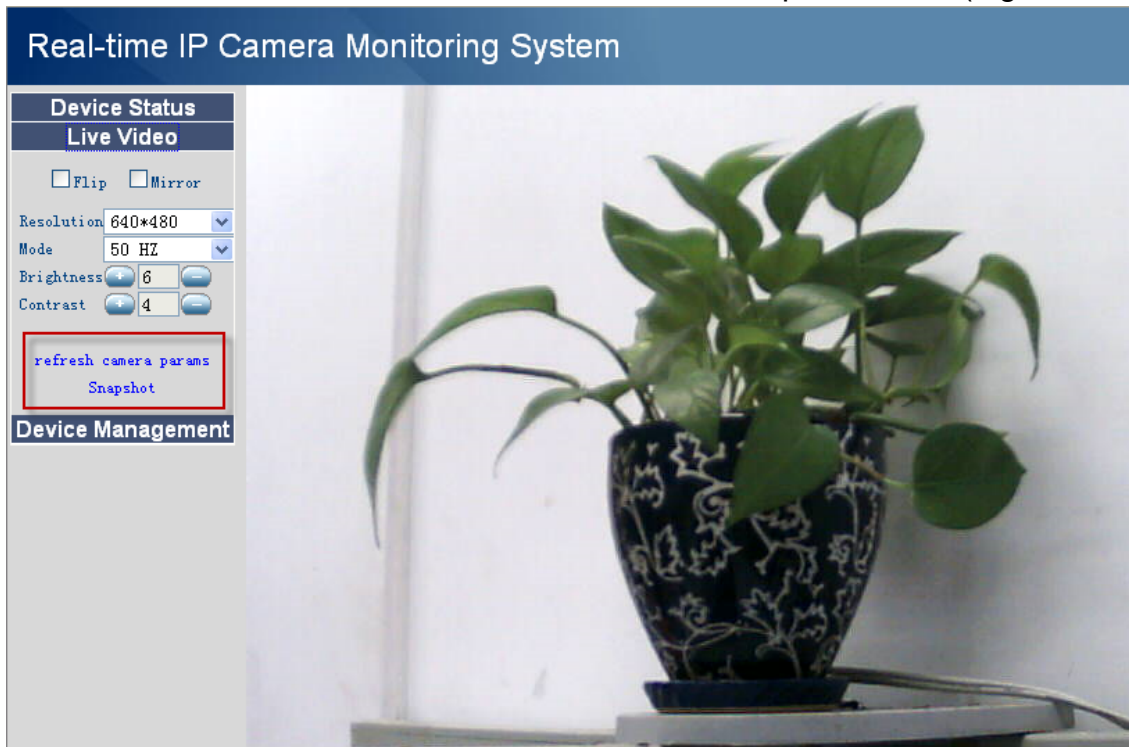


Figure 2.20

2.6 For Administrator

For IE browser

Click **For Administrator**. You will see the **Device Status**.

It contains device ID, firmware version of the camera and other status of the camera.

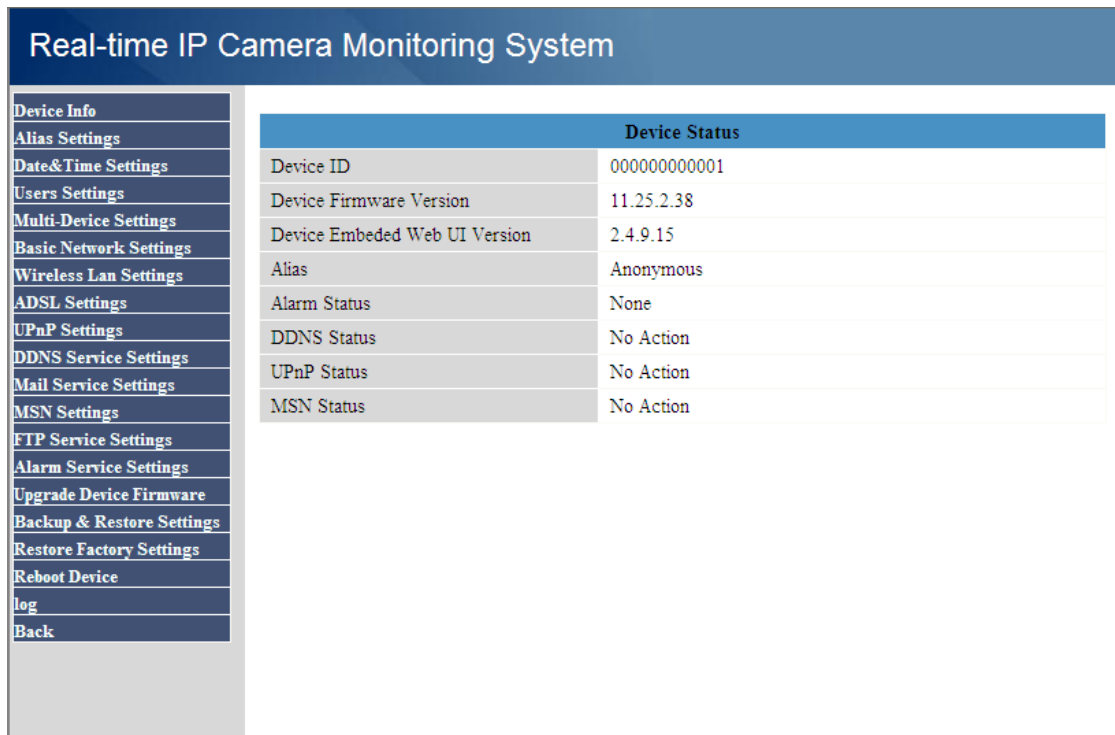


Figure 2.21

For Firefox, Google chrome and safari

Click **Device Management** and you will enter the settings page for administrator.

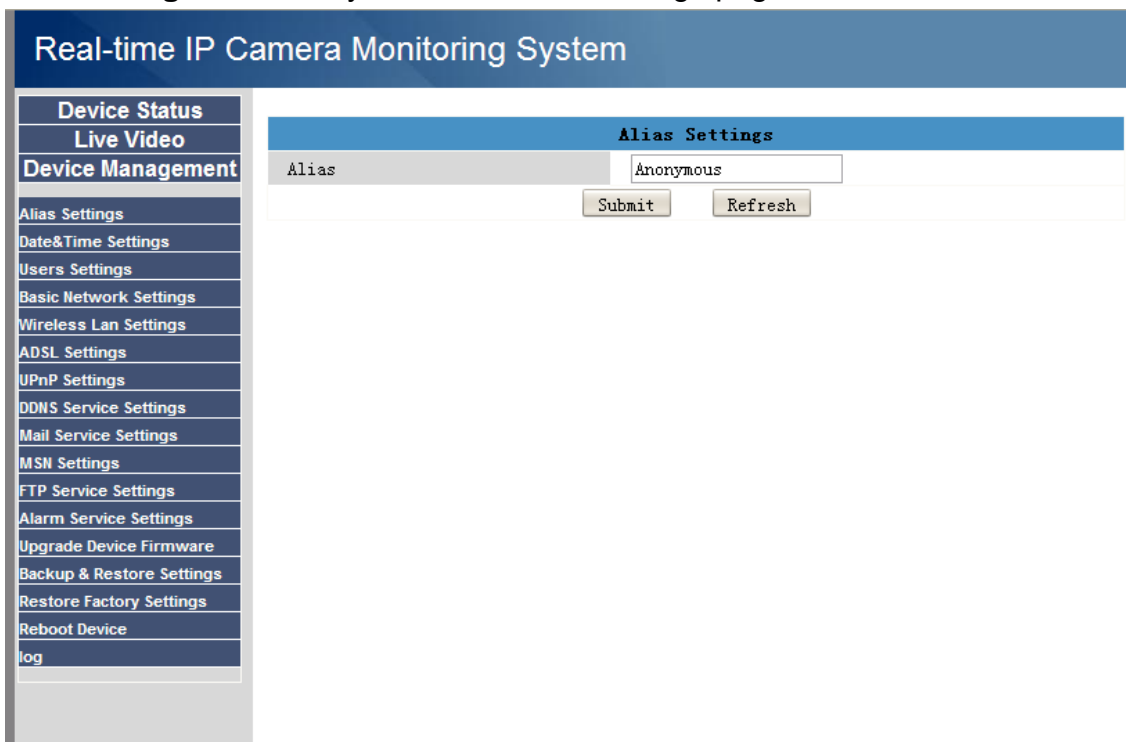


Figure 2.22

We can see the difference from Figure 2.21 and Figure 2.22.

Figure 2.22 has the three following options that Figure 2.21 does not have.

Device Info: In fact. Click **Device Status** when you use Firefox or Google browser. You will see the same information with Figure 2.21.

Multi-Device Settings: The function is controlled by the activeX, so if you use Firefox or Google browser. It is impossible to use this function.

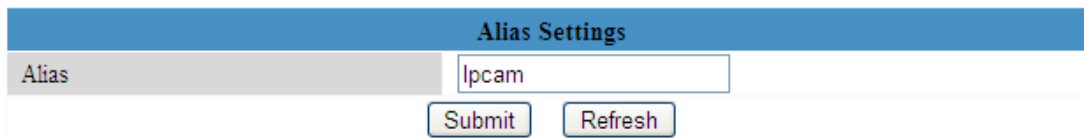
Back: In Firefox or Google browser. It is easy to click Live Video or Device Status to go back.

NOTE: Record and multi-device function are controlled by activeX controller, so if you use firefox or google chrome, it is impossible to find these options.

3 How to do settings in For Administrator

3.1 Alias Settings

Default alias is anonymous. You can set a name for your camera here. Such as lpcam, then click **Submit** after change this. The alias name supports special character.

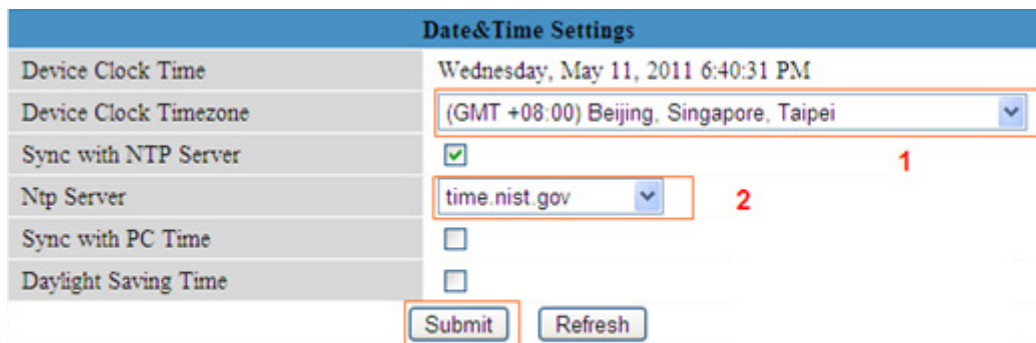


Alias Settings	
Alias	<input type="text" value="lpcam"/>
<input type="button" value="Submit"/> <input type="button" value="Refresh"/>	

Figure 3.0

3.2 Date & Time Settings

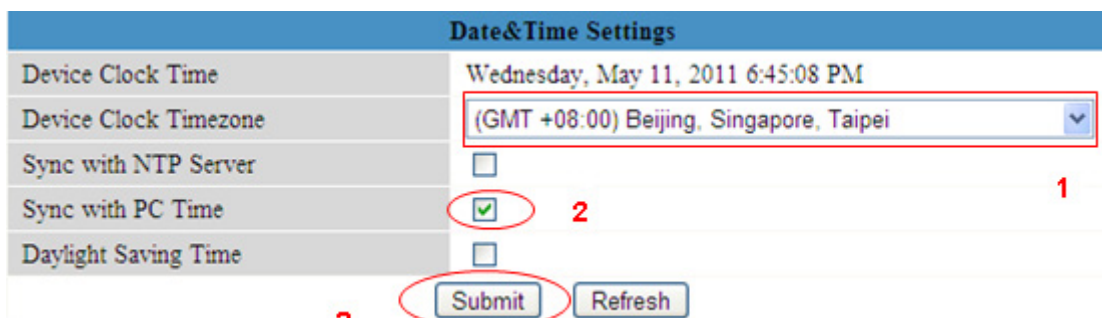
Choose clock timezone of your country. You can choose **Sync with NTP Server** (Figure 3.1a) or **Sync with PC Time**(Figure 3.1b). If you want to advance time ,the option of **Daylight Saving Time** is right for you . Choose advance time as you like(Figure 3.2)



Date&Time Settings	
Device Clock Time	Wednesday, May 11, 2011 6:40:31 PM
Device Clock Timezone	<input type="text" value="(GMT +08:00) Beijing, Singapore, Taipei"/>
Sync with NTP Server	<input checked="" type="checkbox"/> 1
Ntp Server	<input type="text" value="time.nist.gov"/> 2
Sync with PC Time	<input type="checkbox"/>
Daylight Saving Time	<input type="checkbox"/>
<input type="button" value="Submit"/> <input type="button" value="Refresh"/>	

3

Figure 3.1a



Date&Time Settings	
Device Clock Time	Wednesday, May 11, 2011 6:45:08 PM
Device Clock Timezone	<input type="text" value="(GMT +08:00) Beijing, Singapore, Taipei"/>
Sync with NTP Server	<input type="checkbox"/>
Sync with PC Time	<input checked="" type="checkbox"/> 2
Daylight Saving Time	<input type="checkbox"/>
<input type="button" value="Submit"/> <input type="button" value="Refresh"/>	

3

Figure 3.1b

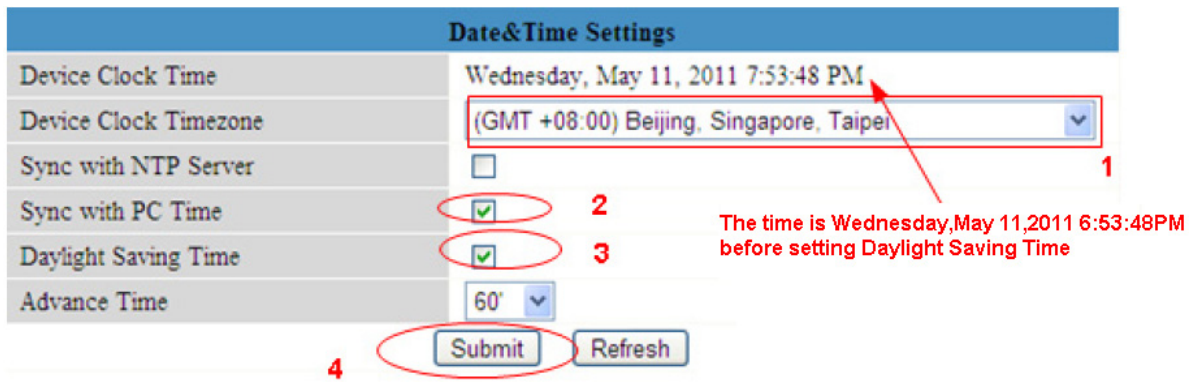
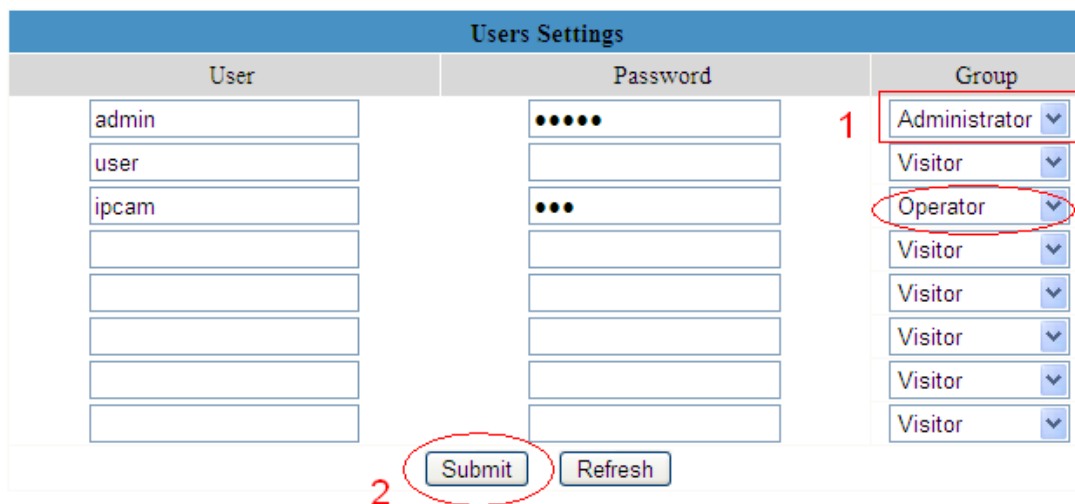


Figure 3.2

3.3 User Settings

You can set permission for visitor, operator and administrator. Click **Submit** after finish these settings. The camera will reboot.



Choose a path for record and alarm record

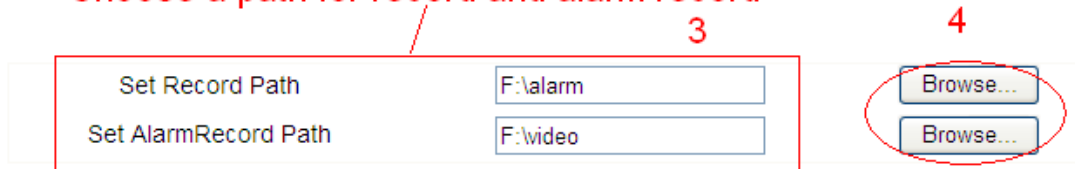


Figure 3.3

Here you can set record path and alarm record path for the camera. Click **Browse** and choose path for them. Record path will store the recording file when record manually. (Click record icon to record. Figure 2.18)

Alarm record path will store the recording file when motion trigger. (Set motion alarm first. (Figure 3.30)

The both default path is C:\Documents and Settings\All Users\Documents.

NOTE: In Windows7 or Vista, if you could not change the record path. Please set as

below:

Windows7 or Vista's security level is higher than Windows XP/2000.For "set record path" function, user should add the Device IP address to the IE's 'Trusted sites' first. The step is: IE browser→Tool→Internet Proper→Security→Trusted sites→Sites→Add

3.4 Multi-Device Settings

The firmware inside the camera can support max 9 device monitoring at the same time.

3.4.1 Add cameras in LAN

In Multi-Device Settings page, you can see all devices searched in LAN. The 1st Device is the default one. You can add more cameras in the list in LAN for monitoring. The inside software of camera supports up to 9 IP Cameras online simultaneously. Click **The 2nd Device** and click the item in the **Device List in LAN**, Alias, Host and Http Port will be filled in the boxes below automatically. Enter the correct username and password then click **Add**. Add more cameras in the same way. After add all cameras. Please choose **Submit**.

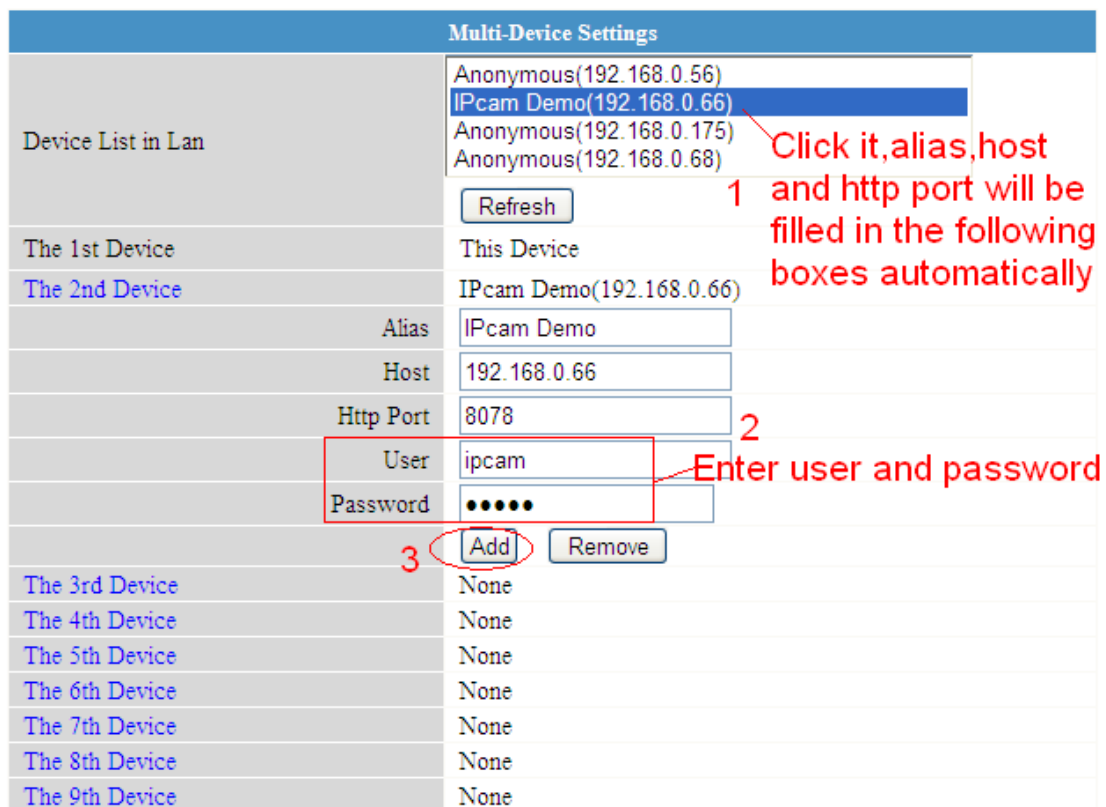
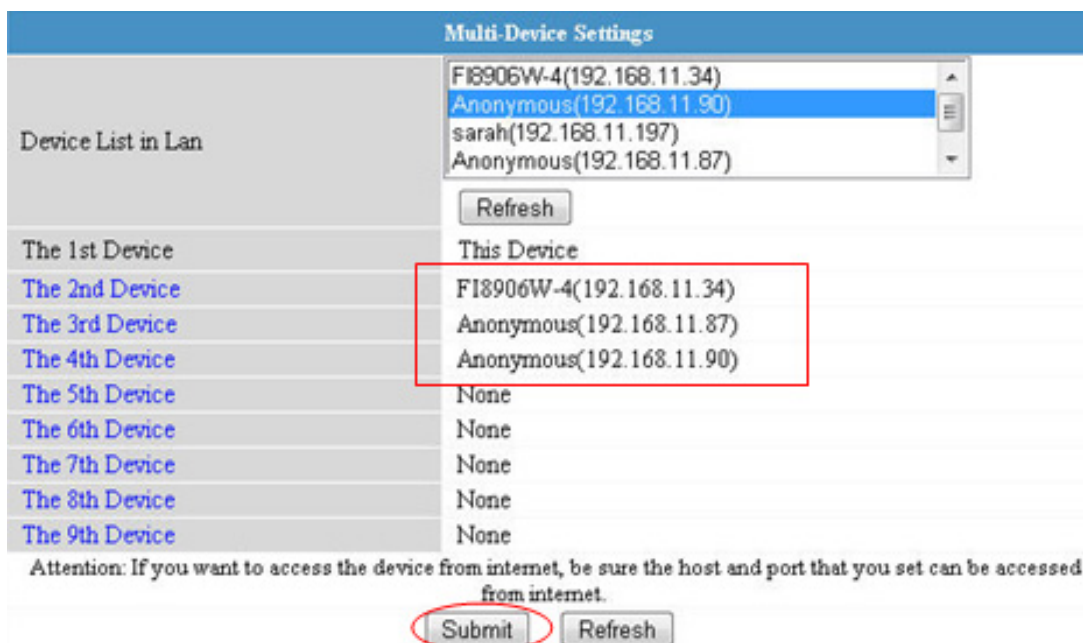


Figure 3.4



Click submit after you add all the cameras

Figure 3.5

Choose **For Visitor** and then click four windows. You will see all the four cameras you add.

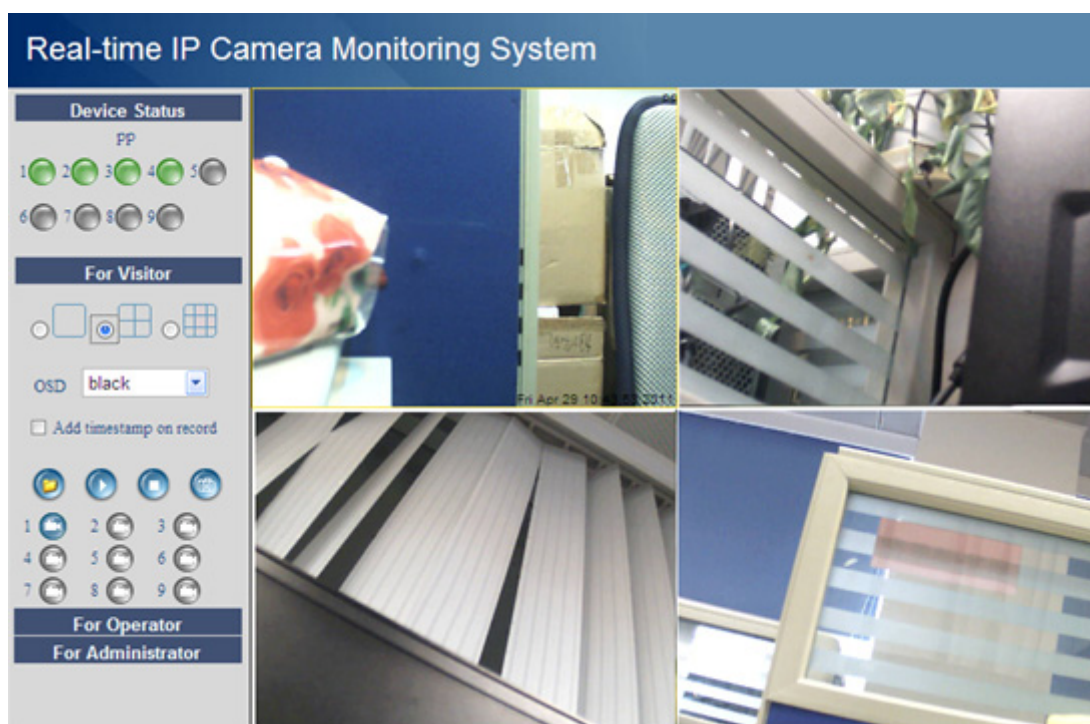


Figure 3.6

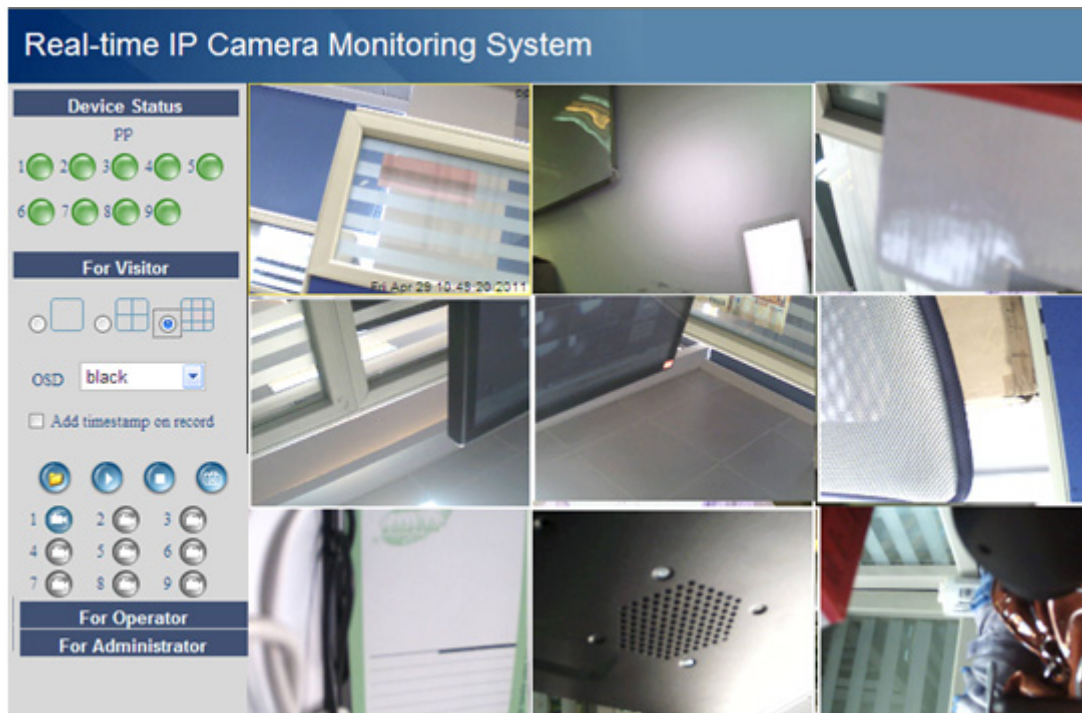


Figure 3.7

3.4.2 Add cameras in WAN

If you want to view all cameras in internet. (remote computer) You need add them use DDNS domain name. Firstly, make sure all of the cameras you will add can be accessed in internet. (View **How to set DDNS settings in Quick Installation Guide**)

Login the first camera use DDNS domain name and port.

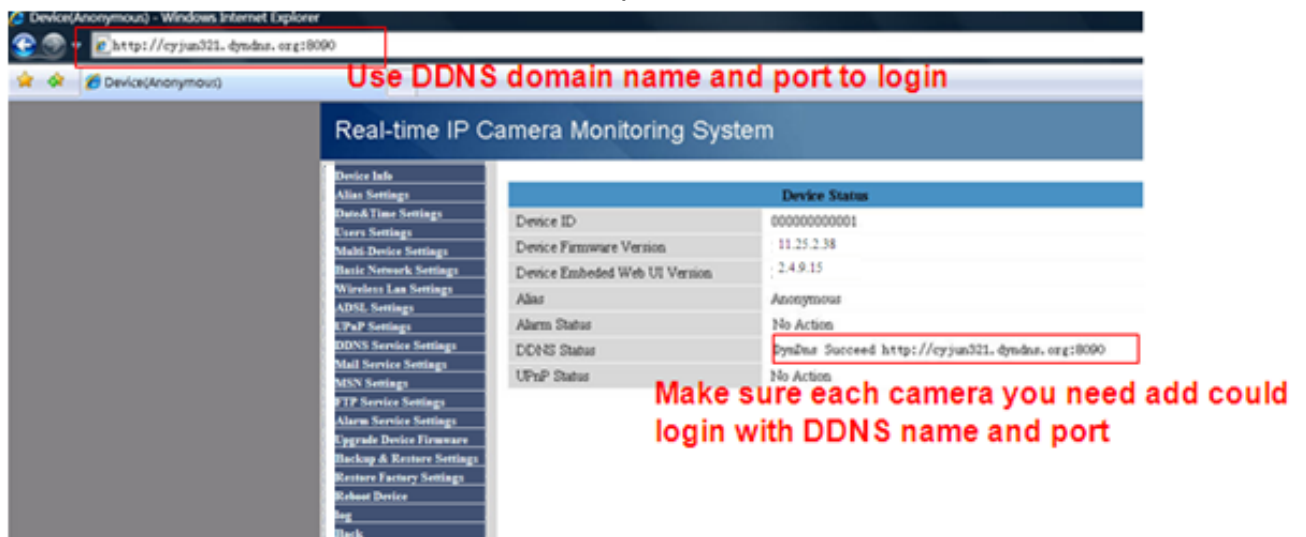


Figure 3.8

If you have several cameras, you can use the same DDNS domain name; only need set different port number for each camera.

Click **Multi-Device Settings**. Choose **The 2nd Device**. Fill in the 2nd camera's name, DDNS domain name, port number. Enter user name and password and then choose Add. (Figure 3.9)

NOTE: Here Host must be filled in the second camera's DDNS domain name, not its LAN IP.

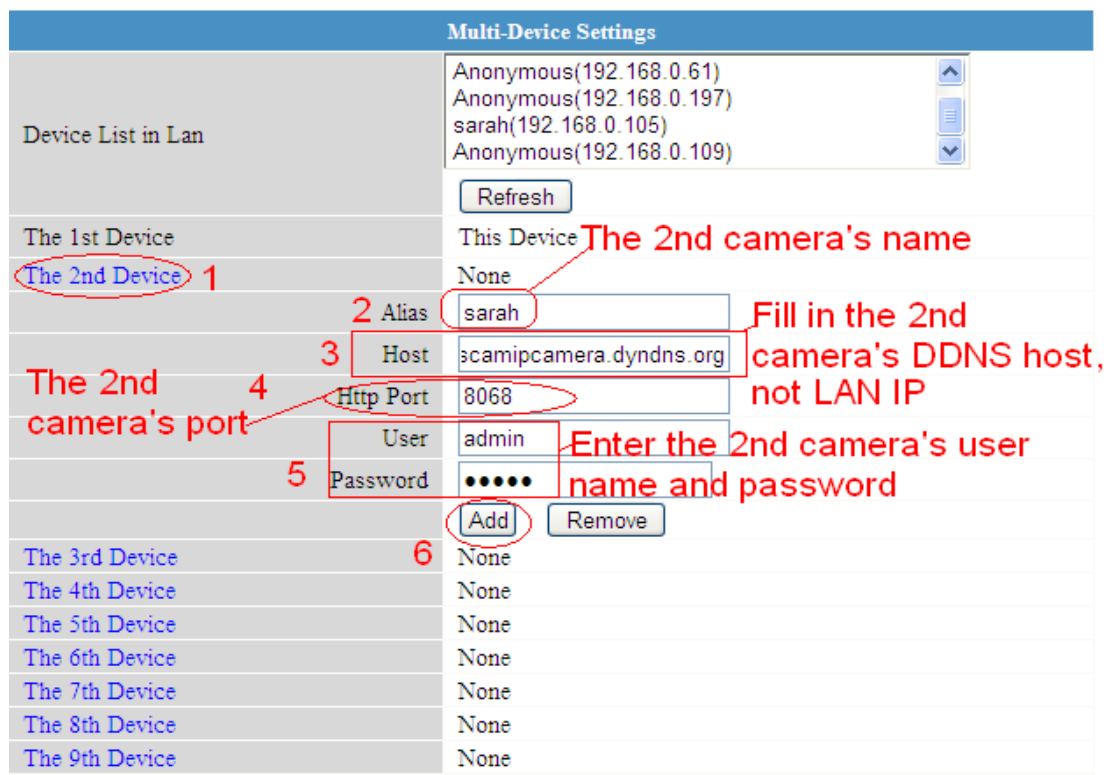
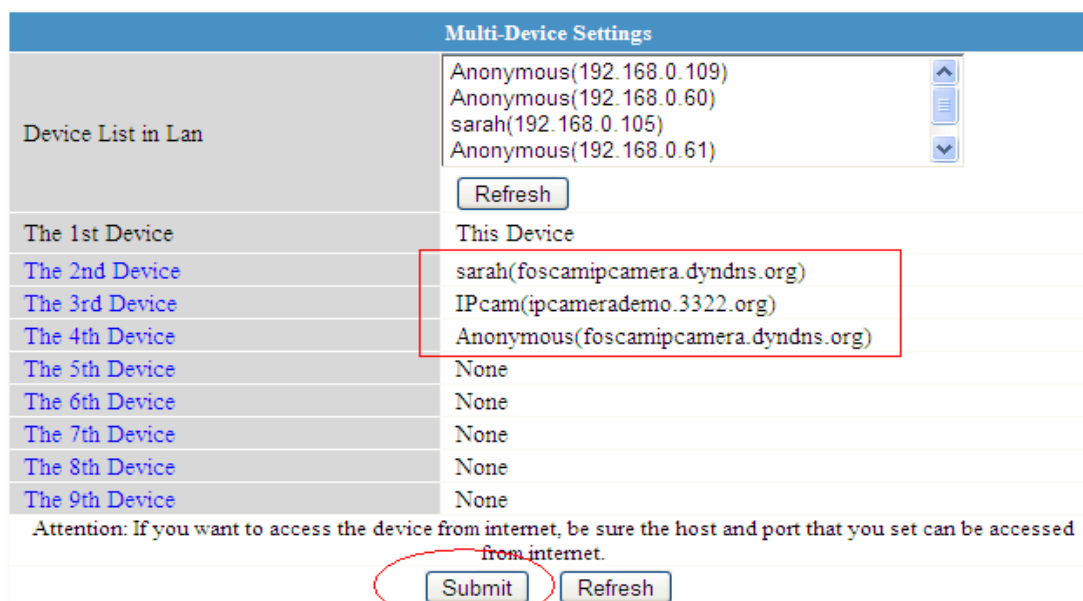


Figure 3.9

Add the other cameras in the same way. Click **Submit** after add all of them.



Click **Submit** after finishing all the settings

Figure 3.10

Go back to video window. You will see all of the cameras in internet.

When you out of town, you can use the first camera's DDNS domain name and port to view all the cameras via internet.

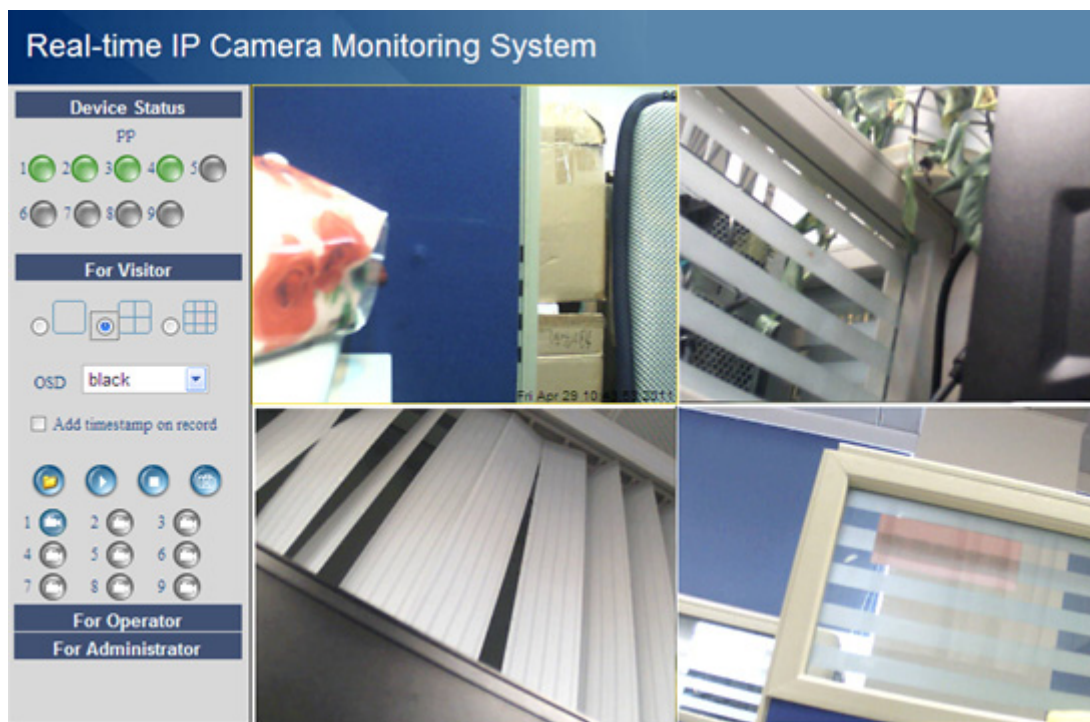


Figure 3.11

3.5 Basic Network Settings

If you want to set a static IP for the camera, you need set **Basic Network Settings**. Keep the camera in the same subnet of your router or computer.

Basic Network Settings	
Obtain IP from DHCP Server	<input type="checkbox"/>
IP Addr	<input type="text" value="192.168.0.109"/>
Subnet Mask	<input type="text" value="255.255.255.0"/>
Gateway	<input type="text" value="192.168.0.1"/>
DNS Server	<input type="text" value="192.168.0.1"/>
Http Port	<input type="text" value="8100"/>
Network Lamp	<input checked="" type="checkbox"/>
<input type="button" value="Submit"/> <input type="button" value="Refresh"/>	

Figure 3.12

It is the same result if set these settings in IP Camera Tool. (Figure 2.5)

If you don't know subnet mask, gateway and DNS server. You can check your computer's local area connection. It contains all the information.

The step is **Control Panel**→**Network Connections**→**Dbclick Local Area Connections** →
Choose **Support**→**Details**. You will see all the information in it. (Figure 3.14)

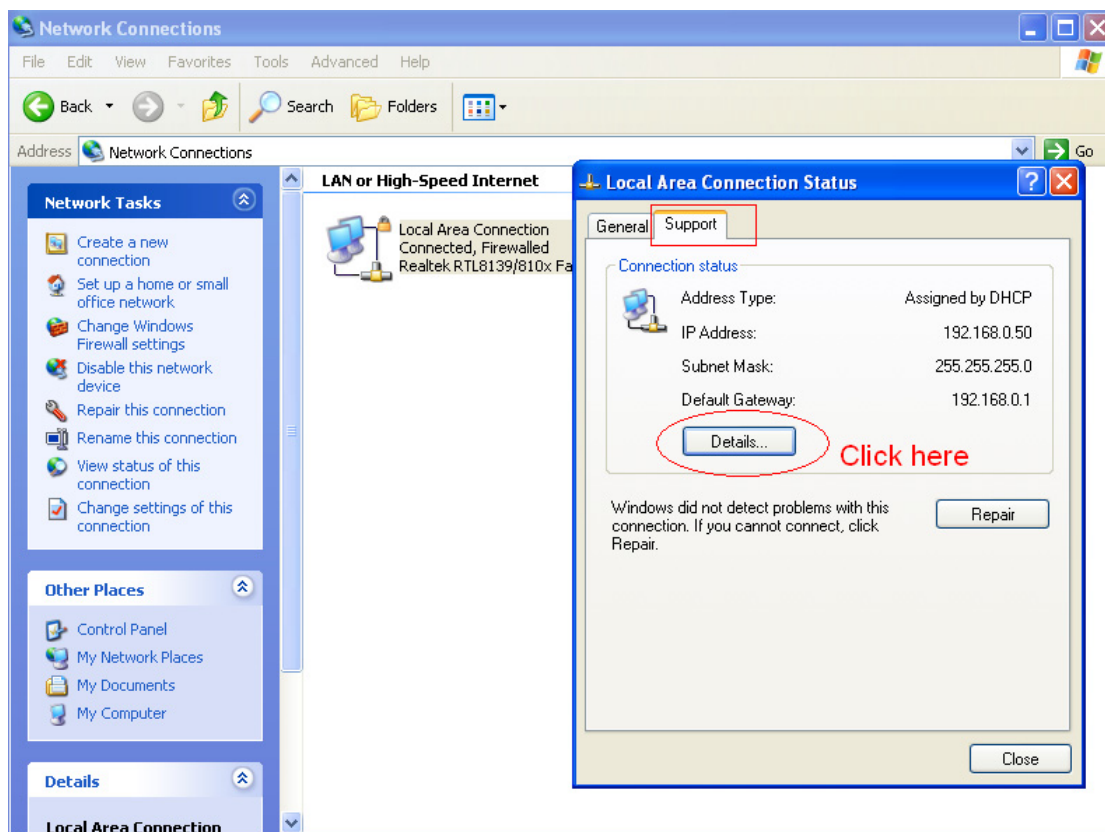


Figure 3.13

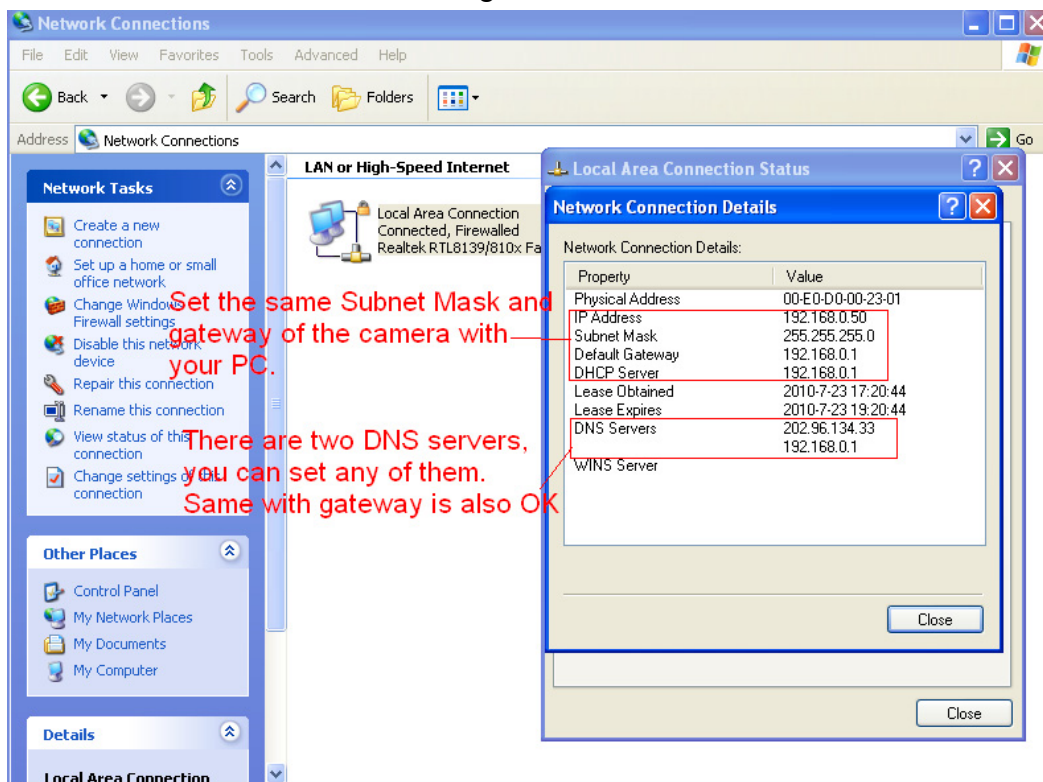


Figure 3.14

If you don't know DNS server, you can set it the same with gateway.

3.6 Wireless LAN Settings

Please view **How to set Wireless LAN Settings** in **Quick Installation Guide**.

3.7 ADSL Settings

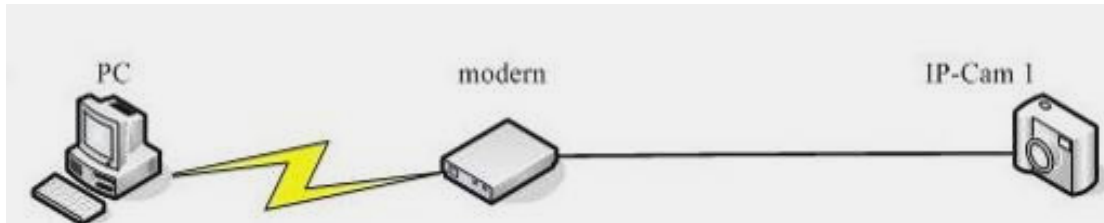


Figure 3.15

When connected to the Internet through ADSL directly, you can enter the ADSL username and password obtained from ISP.

ADSL Settings	
Using ADSL Dialup	<input checked="" type="checkbox"/>
ADSL User	<input type="text" value="SZ10753952765089"/>
ADSL Password	<input type="password" value="••••••••"/>
<input type="button" value="Submit"/> <input type="button" value="Refresh"/>	

Figure 3.16

3.8 UPnP Settings

Choose **Using UPnP to MAP Port** and then click **Submit**.

UPnP Settings	
Using UPnP to Map Port	<input checked="" type="checkbox"/>
<input type="button" value="Submit"/> <input type="button" value="Refresh"/>	

Figure 3.17

Here the software inside the camera for UPnP only contains port forwarding now. It also has much relation with security settings of your router, sometimes, it may show error information. So we recommend you do port forwarding manually in your router.

3.9 DDNS Service Settings

Please view the detail information in **Quick Installation Guide** about **How to set DDNS Service Settings**.

3.10 Mail Service Settings

If you want the camera send emails when motion trigger. You need set **Mail Service Settings**. Please set these settings as the following picture. (Figure 3.18)

The screenshot shows the 'Mail Service Settings' form with the following fields and annotations:

- Sender:** cuiyao93@gmail.com (Annotation 1: Mailbox for sender must support SMTP)
- Receiver 1:** yaoyao160@sohu.com (Annotation 2: Mailbox for receiver need not support SMTP, you can set 4 receivers)
- Receiver 2:** (Empty)
- Receiver 3:** (Empty)
- Receiver 4:** (Empty)
- SMTP Server:** smtp.gmail.com (Annotation 3: Enter SMTP server for sender)
- SMTP Port:** 25 (Annotation 4)
- Transport Layer Security:** STARTTLS (Annotation 5: Gmail only support TLS at port 465 and support STARTTLS at port 25/587.)
- Need Authentication:**
- SMTP User:** cuiyao93@gmail.com (Annotation 6: User name and password)
- SMTP Password:** (Masked with dots)
- Test:** (Annotation 8: Please set at first, and then test.)
- Report Internet IP by Mail:**
- Submit:** (Annotation 7)
- Refresh:** (Button)

Figure 3.18

Make sure your mailbox for sender support SMTP. Here you can fill in four receivers to receive images. **SMTP port** usually is 25, some SMTP server have its own port, such as 587 or 465. And Transport Layer Security usually is None . But if you use Gmail , Transport Layer Security must be TLS or STARTTLS. And SMTP Port must be 465 or 25 or 485 ,which port you choose should be decided by which Transport Layer Security you choose.

NOTE: Please click **Submit** first before choose **Test**.

You will see the test result after click **Test**.

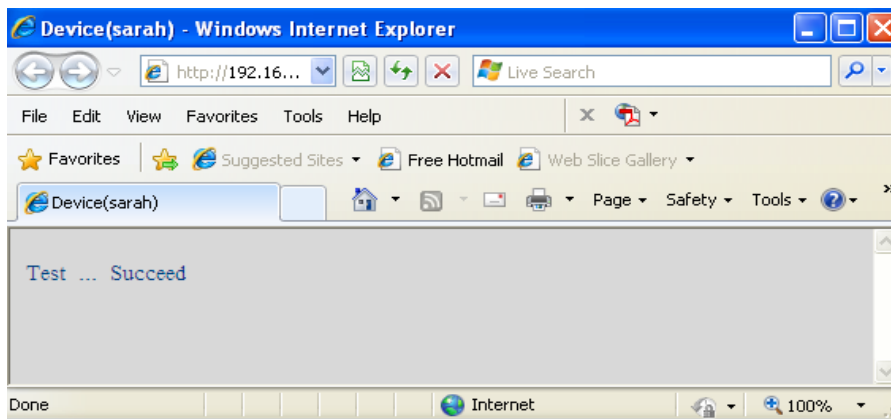


Figure 3.19

If it prompts these following errors when you click **Test**. Please check whether the information you filled in are incorrect. Make sure all of them are correct and try it again.

- 1) Can not connect to the server

- 2) Network Error. Please try later
- 3) Server Error
- 4) Incorrect user or password
- 5) The sender is denied by the server. Maybe the server need to authenticate the user, please check it and try again
- 6) The receiver is denied by the server. Maybe because of the anti-spam privacy of the server
- 7) The message is denied by the server. Maybe because of the anti-spam privacy of the server
- 8) The server does not support the authentication mode used by the device

Report Internet IP by Mail—If choose it, you will receive emails which contain internet IP. When camera power on or Internet IP changed, it will send the internet IP by mail. (For example: IPCAM's urls is http://119.123.207.96:8068). Make sure the port is map to the router correctly.

3.11 MSN Settings

When you forget the domain name of the camera, but you want access it from remote place, what can you do when this happens?

In case of this thing happening, set MSN.

Apply a MSN ID for IPCAM first, then do as the picture.

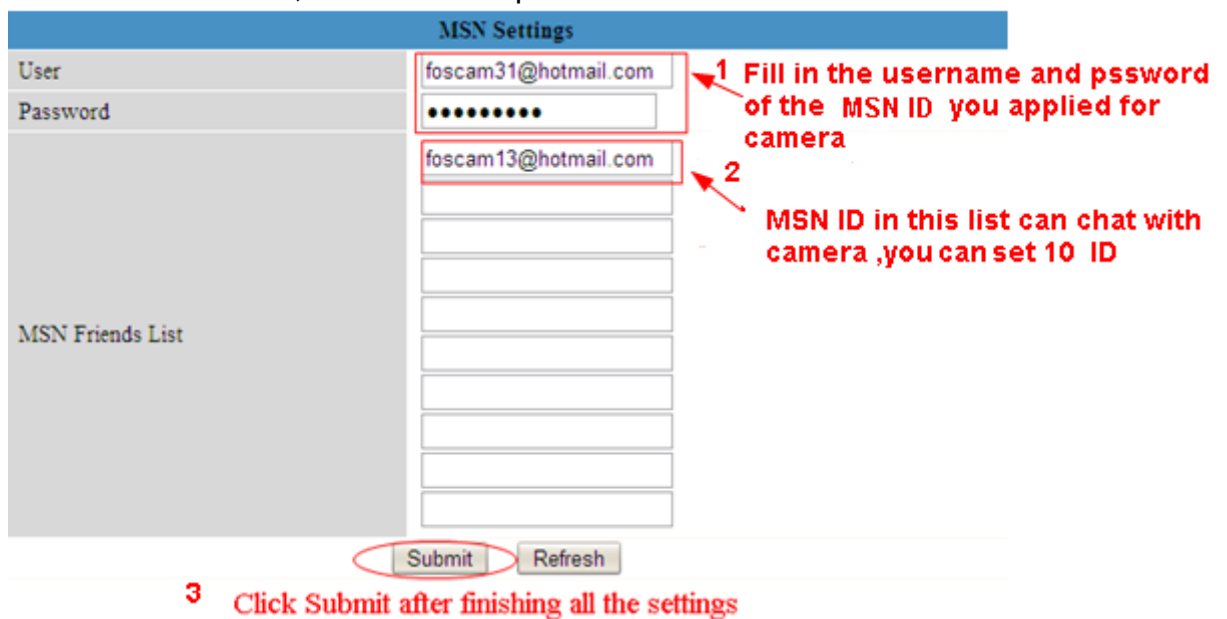


Figure 3.20

After submit, The one who in MSN Friends list login MSN, and then he can chat with camera. For example:

“foscam 13”(look Figure 3.20, it is contained in the MSN Friends List) login MSN, double click the icon of “ foscam31 “(it is the MSN ID you applied for camera ,Figure 3.20), he or she can chat with IPCAM(Figure 3.21)

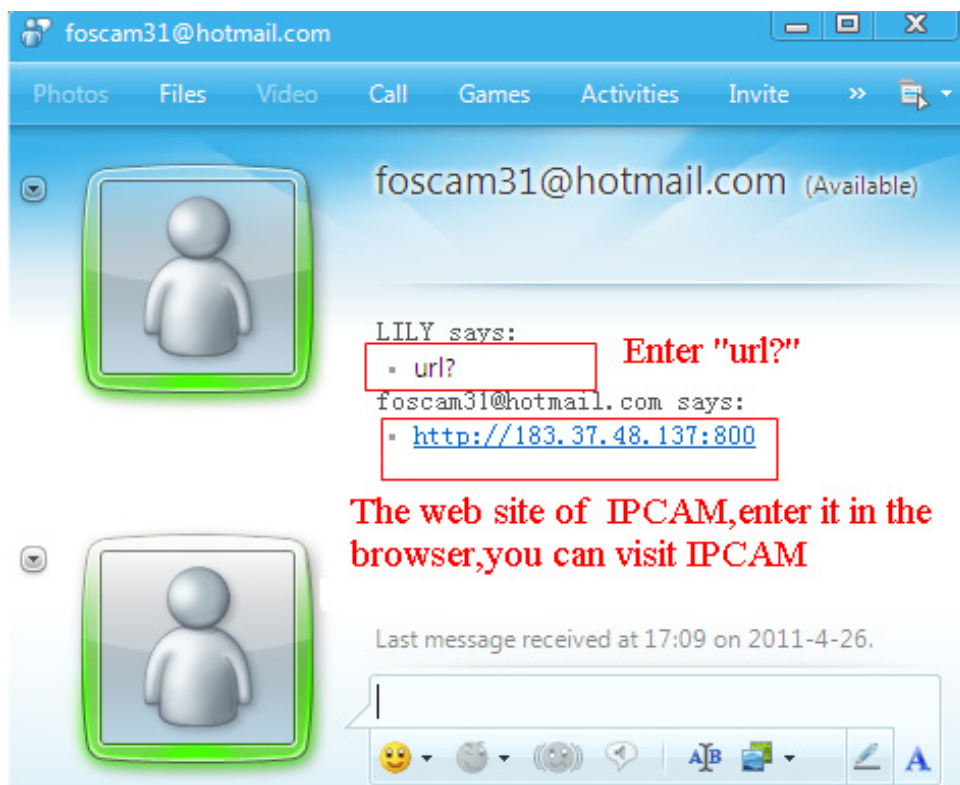


Figure 3.21

So,add your MSN ID to the MSN Friend List ,you can chat with camera and get the access address and then access the camera.

Note: When you login the camera by IP Camera Tool,you can't login MSN ID of camera at the same time.

3.12 FTP Service Settings

If you want upload images to your FTP server. You can set **FTP Service Settings**.

FTP Service Settings	
FTP Server	192.168.0.50
FTP Port	21
FTP User	sarah
FTP Password	•••••
FTP Upload Folder	/
FTP Mode	PORT
	<input type="button" value="Test"/> Please set at first, and then test.
Upload Image Now	<input checked="" type="checkbox"/>
Upload Interval (Seconds)	30
	<input type="button" value="Submit"/> <input type="button" value="Refresh"/>

Please click Submit first before test

Figure 3.22

FTP Service Settings	
FTP Server	<input type="text" value="ftp.mgenseal.com"/>
FTP Port	<input type="text" value="21"/>
FTP User	<input type="text" value="Videotest@mgenseal.com"/>
FTP Password	<input type="password" value="••••••"/>
FTP Upload Folder	<input type="text" value="/"/>
FTP Mode	<input type="text" value="PASV"/>
	<input type="button" value="Test"/> Please set at first, and then test.
Upload Image Now	<input checked="" type="checkbox"/>
Upload Interval (Seconds)	<input type="text" value="30"/>
<input type="button" value="Submit"/> <input type="button" value="Refresh"/>	

Figure 3.23

FTP server: If your FTP server is set up in LAN, you can set as Figure 3.22

If you have a FTP server which you can access in internet, you can set as Figure 3.23

FTP Port: Usually the port is 21

FTP Upload Folder: Make sure that the folder you plan to store images exists. For camera couldn't create the folder itself. Also, the folder must be erasable.

FTP Mode: It supports standard (POST) mode and passive (PASV) mode

Upload Image Now: It will upload images when you choose the checkbox. Here **Upload Interval** refers to the time between the current image and the next image.

Click **Submit** after these settings. Then click **Test**. You will see the following picture.

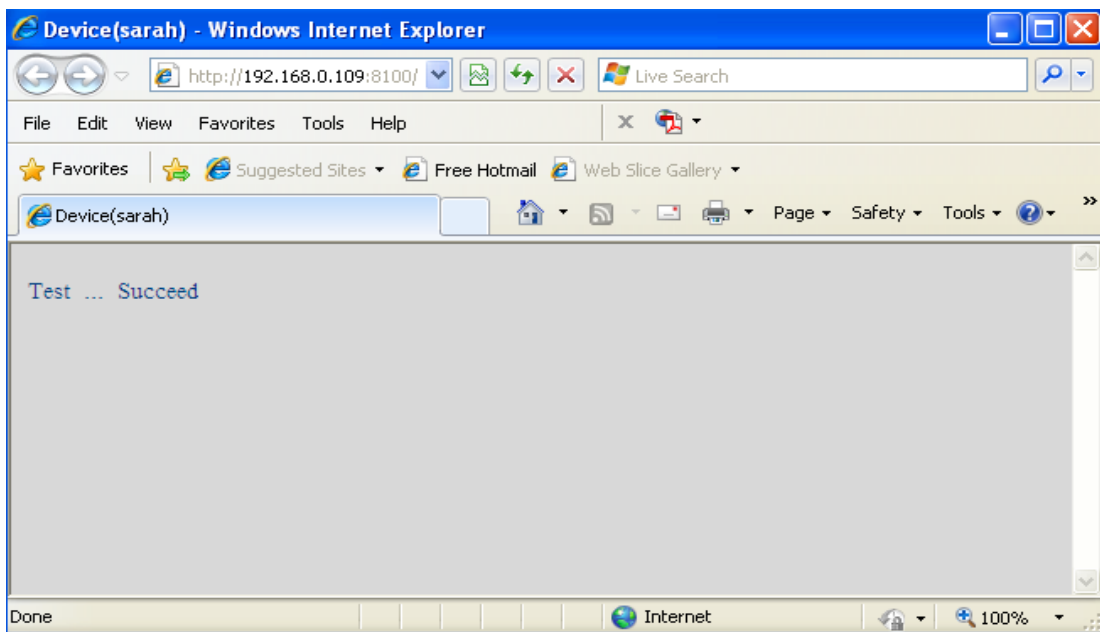


Figure 3.24

If it prompts error information as follows.

- 1) Can not connect to the server. Please check FTP Server is correct or not.
- 2) Network Error. Please try later.
- 3) Server Error.
- 4) Incorrect user or password. Please check the username and password is correct or not.

- 5) Can not access the folder. Please be sure the folder exists and your account is authorized
- 6) Error in PASV mode. Please be sure the server support PASV mode
- 7) Error in PORT mode. PASV mode should be selected if the device is behind a NAT
- 8) Can not upload file. Please be sure your account is authorized

Please check if parameters you filled in are correct or not. The format of image is like 00606E8C1930(sarah)_0_20100728114350_25.jpg

Please check if your FTP server supports this format of file name

3.13 Alarm Service Settings

If you enable **Motion Detect Armed**. It will send mail alerts and upload images when motion trigger.

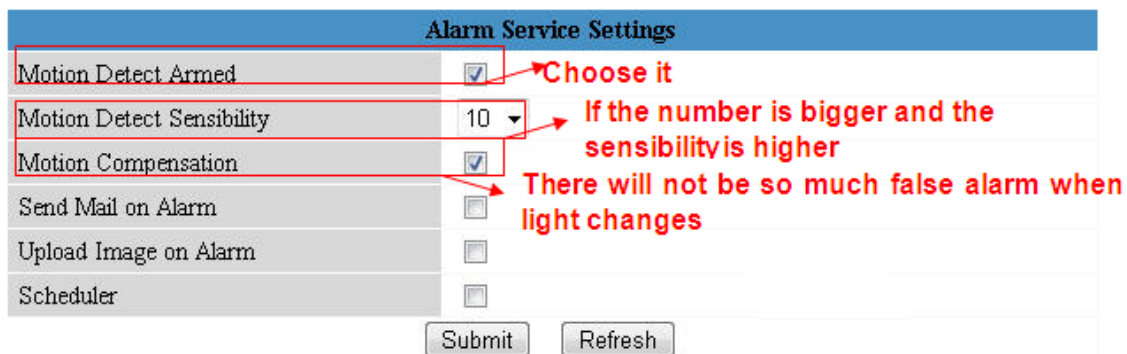


Figure 3.25

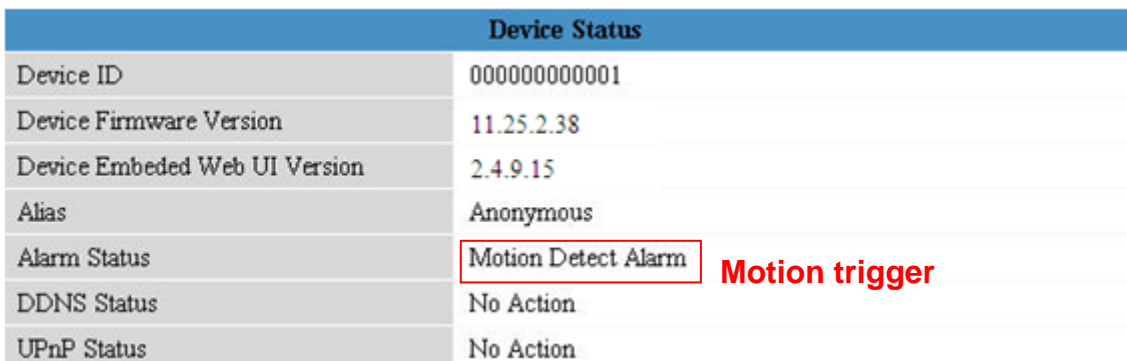


Figure 3.26

If motion trigger after you enable **Motion Detect Armed**. Alarm Status will turn to Motion Detect Alarm.

There are five representation of alarm.

- 1) The light turns red when motion trigger.

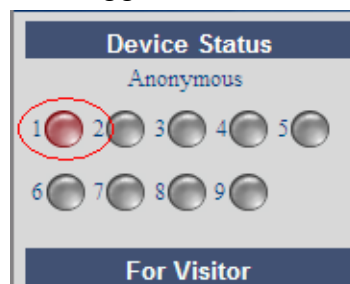


Figure 3.27

- 2) Plug an earphone or a speaker in the computer; you can hear beep sound when the light turns red.
- 3) The camera will record automatically It will recording for one minute after motion trigger. You can find the recording file in the folder which you set to store alarm record. (Figure 3.3)
- 4) Send mails when motion trigger.

If you want to receive images when motion trigger. You need set **Mail Service Settings** first. (Figure 3.18) Then set motion alarm as follows:

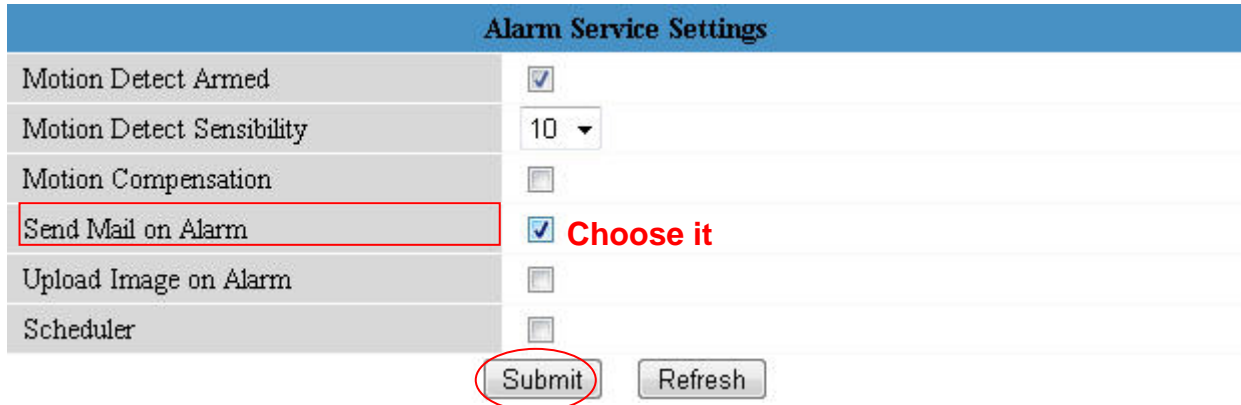


Figure 3.28

If you want the camera send mails in a special time range, not all the time when motion trigger, but only during the time you wish. You can choose Scheduler and set time range for motion alarm. (Figure 3.30)

- 5) Upload images via FTP server when motion trigger.

If you want upload images to FTP server when motion trigger. You need set **FTP Service Settings** first. (Figure 3.22/3.23) Then set motion alarm as below picture.

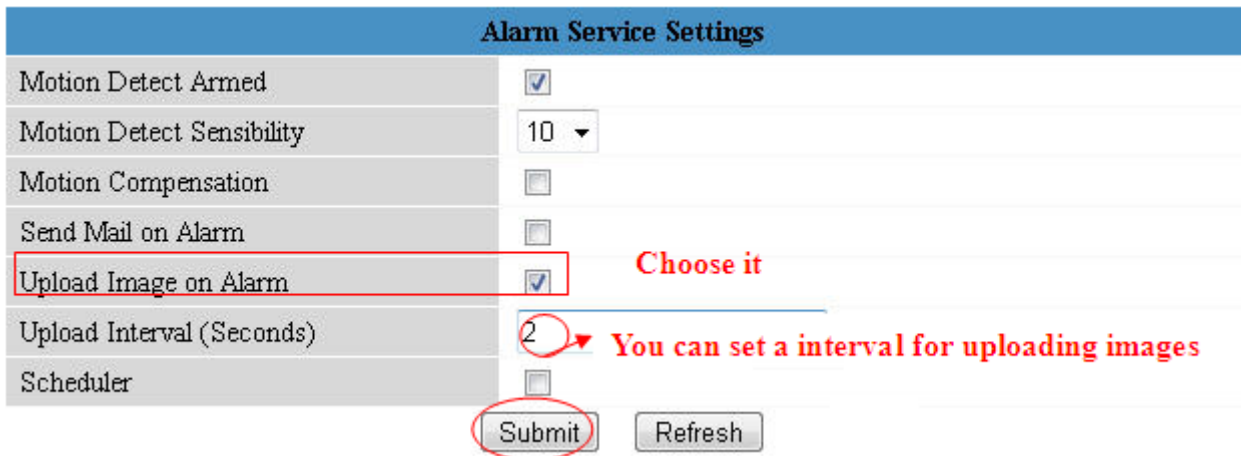


Figure 3.29

There are two ways to alarm.

- 1) Alarm at any time when motion trigger.

Don't choose **Scheduler**. The camera will alarm at any time when motion trigger.

- 2) Plan to alarm.

If you want the camera alarm during the time you set. You need choose **Scheduler** and set time range. (Figure 3.30)

Click left button on the box of time range. It will turn blue. If you want delete it, just click left button on it again. It will turn to gray.

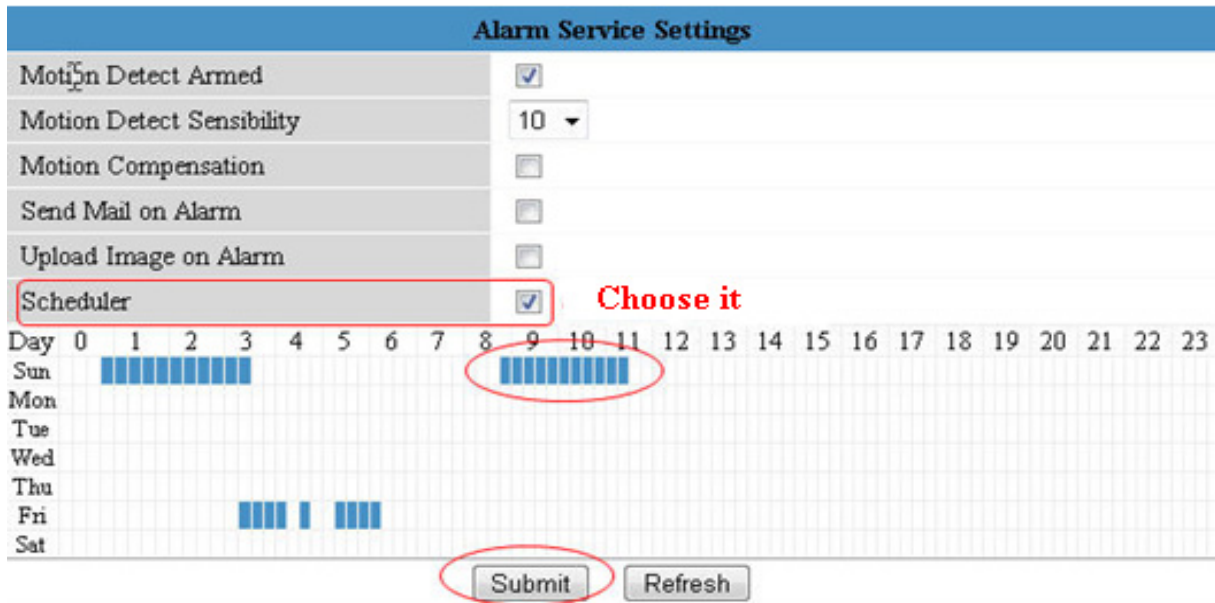


Figure 3.30

3.14 Upgrade Device Firmware

When you upgrade the camera, please upgrade system firmware first and then upgrade Web UI.

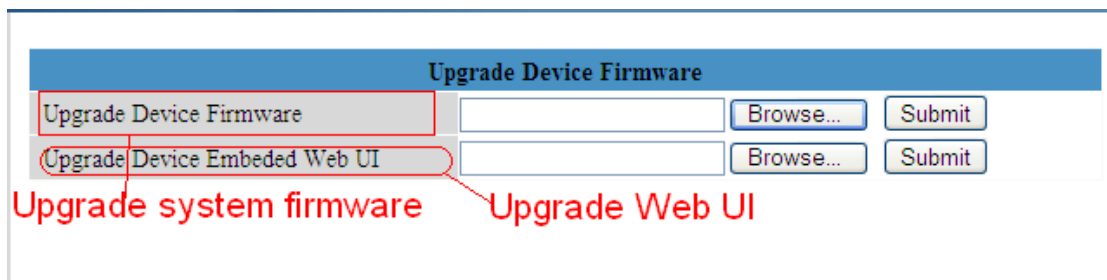


Figure 3.31

Click **Browse**, choose the correct bin file and then click **Submit** to upgrade. Don't shut down the power during upgrade until the IP camera tool finds the camera again.

3.15 Backup & Restore Settings

If you don't want to set all parameters that you've set already. You can click **Submit** and all the parameters you set will be store as a parameters bin file next time.And then ,you could get all parameters which you set before when you login it again

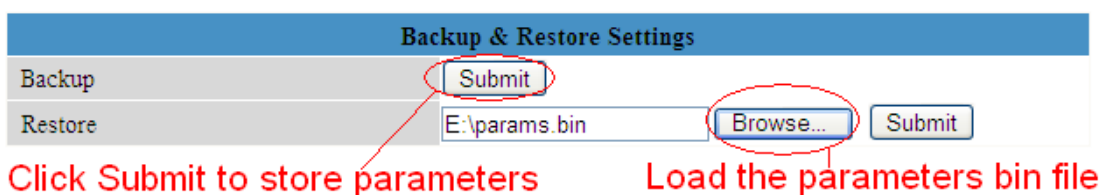


Figure 3.32

3.16 Restore Factory Settings

If you choose restore factory setting. All parameters will return to factory settings.

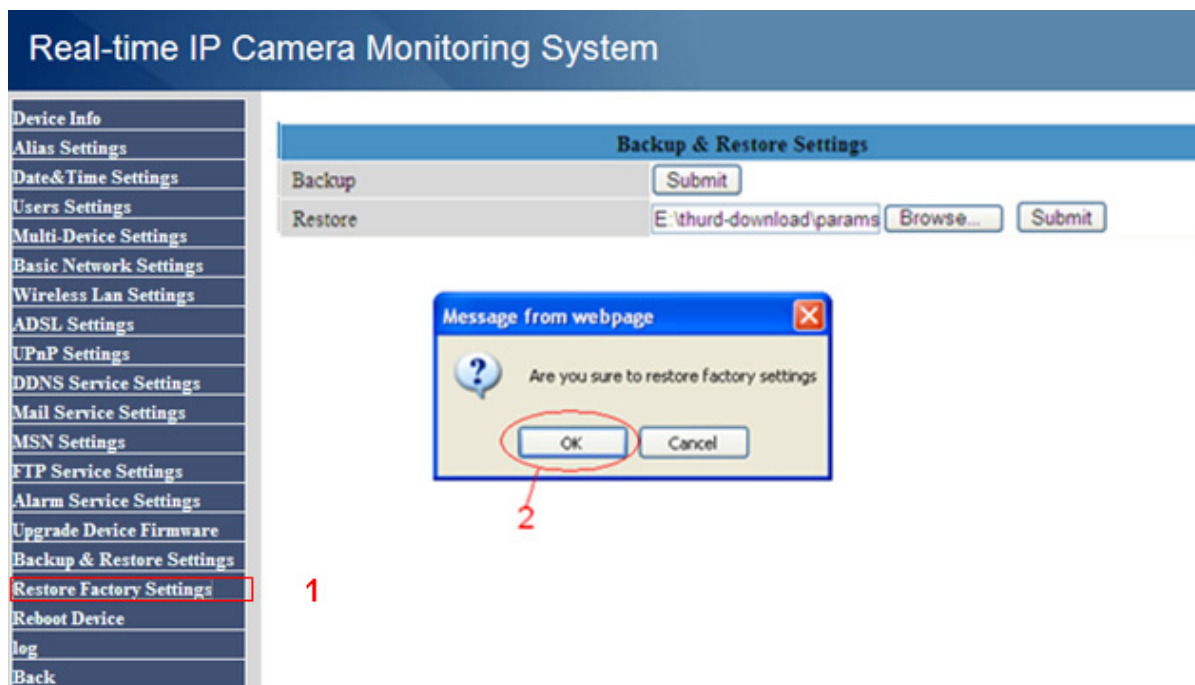


Figure 3.33

3.17 Reboot Device

Here click reboot device is the same as plug the power and re-plug it.

3.18 Log

Here log record that who access the camera.

log					
Tue, 2010-11-30 09:25:36	admin	192.168.11.66	access		
Tue, 2010-11-30 09:26:10	admin	192.168.11.66	access		

Figure 3.34

3.19 Back

Here if you choose back, you will go back to video window.

4 APPENDIX

4.1 Frequently Asked Questions

NOTE: Any questions you would meet, please check Network connections firstly. Check the working status revealed by the indicators on the network server, hub, exchange and network card. If abnormal, check the network connections.

4.1.1 I have forgotten the administrator username and/or password

To reset the administrator username and password, Press and hold down the RESET BUTTON for 30 seconds. Releasing the reset button, username and password will turn to the factory default administrator username and password. please power on the camera before reset

Default administrator username: **admin**

Default administrator password: No password

4.1.2 Subnet doesn't match, dbclick to change

If IP Camera Tool shows error information "Subnet doesn't match, dbclick to change!" Please choose **Obtain IP from DHCP server**. (Figure 2.4)

If it still show this error after obtain IP from DHCP server. Please check local area connection of your computer, change subnet, gateway of the camera. Keep them in the same subnet of your computer. (Figure 2.5)

4.1.3 No Pictures Problems

The video streaming is transmitted by the ActiveX controller. If ActiveX controller isn't installed correctly you will see no video image. There are two ways to resolve this problem:

1) Install "IP Camera Tool", ActiveX controller is installed simultaneity (recommendable). (Figure 2.10~Figure 2.12)

2) Download ActiveX controller and set the safety property of IE in the PC when you view it first time: IE browser→Tool→Internet Proper→Security→Custom Level→ActiveX control and Plug-ins. Three options of front should be set to be "Enable", The ActiveX programs read by the computer will be stored. As follows:

Enable: Download unsigned ActiveX controls

Enable: Initialize and script ActiveX controls not marked as safe

Enable: Run ActiveX controls and plu-ins

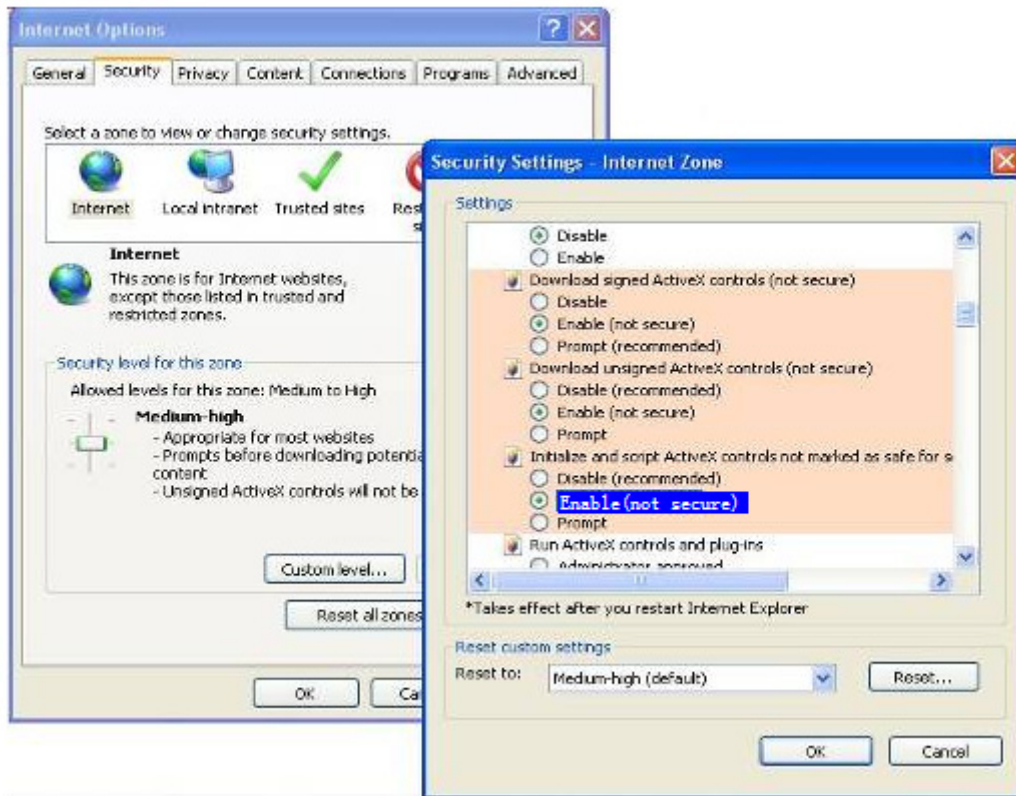



Figure 4.1

If you allow the activeX running, but still could not see living video, only a red cross in the center of the video. There is a yellow light in the device status. 

Not green. Please change another port number to try. Don't use port 80, use port 85, 8005.etc.

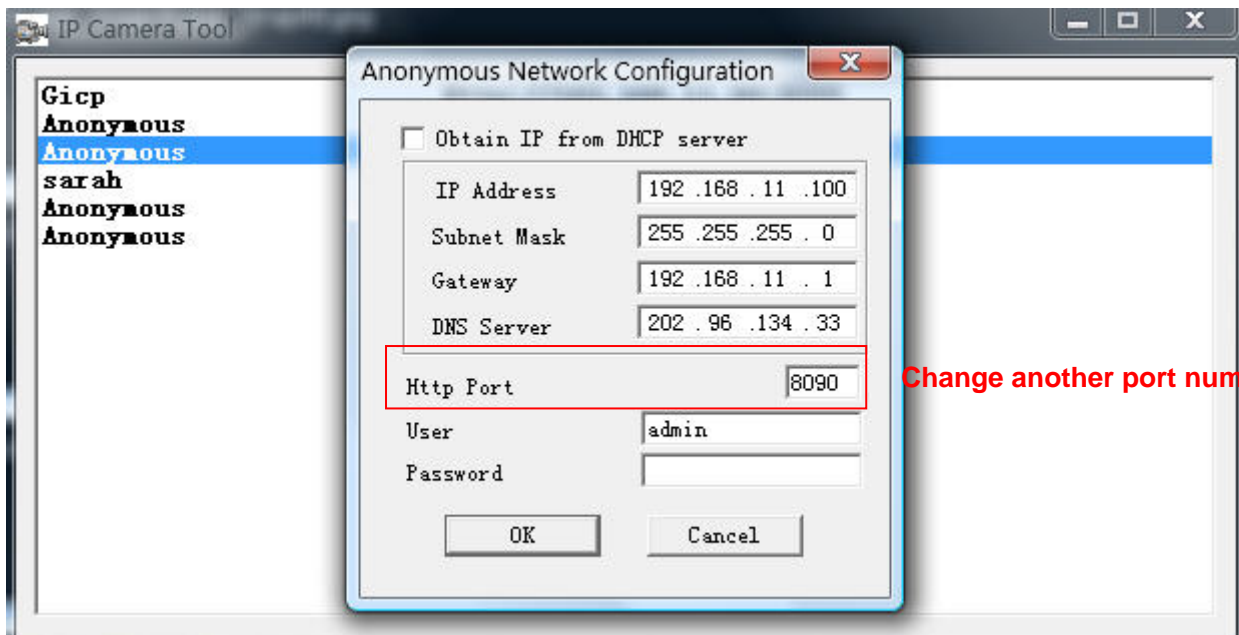


Figure 4.2

NOTE: Make sure that your firewall or anti-virus software does not block the camera or activeX. If you could not see video, please shut down firewall or anti-virus software to try again.

4.1.4 Can't access IP camera in internet

There are some reasons:

- 1 ActiveX controller is not installed correctly (see more details: Figure 2.10~Figure 2.12).
- 2 The port which camera used is blocked by Firewall or Anti-virus software. Please change another port number and try again. (Figure 4.2)
- 3 Port forwarding is not successful (see more details in **Quick Installation Guide—How to set DDN Service settings**)

Double check these settings and make sure they are correct.

4.1.5 IP Camera Tool could not find camera's IP

Please check if the camera works well. Check if network cable is loose or not.

Make sure DHCP is enabled in your router, don't enable MAC address filter.

Make sure that firewall or anti-virus software does not block the camera. You can add the camera as a trusted site in your firewall or anti-virus software.

4.1.6 UPnP always failed

UPnP only contains port forwarding in our recent software. Sometimes, it may be failed to do port forwarding automatically because of firewall or anti-virus software. It also has much relation with router's security settings. So we recommend you do port forwarding manually. You can view your camera in internet successfully after you do port forwarding manually in your router.

4.1.7 Couldn't find the shortcut on desktop after install IP camera tool

If you use Windows7 or Vista, You could not find the shortcut on desktop after install the IP camera tool, please check if the path of the tool port to is correct or not.

For example, as it was pointing to C:\Windows\System32\IPCamera.exe.

Please fix this by pointing the shortcut to the correct path

C:\Windows\SysWOW64\IPCamera.exe. After this you could use the shortcut without any problems.

4.1.8 I can't change the record path

When you use Windows7 or Vista, you may be not able to change the record path for the security settings of computer. Please add the camera as a trusted site to solve this issue. The step is

IE browser→Tool→Internet Proper→Security→Trusted sites→Sites→Add

4.1.9 I can't find multi-device settings and record icon

Record and multi-device function are controlled by activeX controller. So if you use Firefox, Google chrome and safari, it is impossible to use these function.

4.1.10 Camera can not connect wireless

If your camera could not connect wireless after you set wireless settings and plug out the cable. Please check whether your settings are correct or not. (details: **Wireless LAN settings in Quick Installation Guide**)

Normally, camera can't connect wireless mainly because of wrong settings. Make sure broadcast your SSID; use the same encryption for router and camera. Share key should not contain special characters, only word and number will be better. Don't enable MAC address filter.

4.1.11 I can't see other cameras which in multi-device when remote access

If you want to view all the cameras in WAN. Make sure that each camera you add in multi-device settings can be logon use DDNS name and port number. Use DDNS domain name to fill in the host checkbox, not camera's LAN IP. (details: How to add cameras in WAN)

4.1.12 Only see black screen or unreasonable code when remote login

If you could access the login page in remote place, it indicates that your DDNS settings are correct. You could not see living video but only some undefined characters, it may be the internet speed problems, especially the camera work on Wi-Fi.

4.2 Default Parameters

Default network Parameters

IP address: dynamic obtain
 Subnet mask: 255.255.255.0
 Gateway: dynamic obtain
 DHCP: Disabled
 DDNS: Disabled

Username and password

Default administrator username: **admin**
 Default administrator password: No password

4.3 Specifications

ITEMS	FI8903W/FI8904W/FI8905W
-------	-------------------------

Image Sensor	Image Sensor	High Definition Color CMOS Sensor
	Display Resolution	640 x 480 Pixels(300k Pixels)
	Lens(03)	f: 3.6mm or f: 6mm (IR Lens)
	Lens(04)	f: 3.6mm or f: 6mm (IR Lens)
	Lens(05)	f: 6mm, or f: 8mm or f:12mm , F:1.2(IR Lens)
	Mini. Illumination	0.5Lux
Lens	Lens Type	Glass Lens
Video	Image Compression	MJPEG
	Image Frame Rate	15fps(VGA),30fps(QVGA)
	Resolution	640 x 480(VGA), 320 x 240(QVGA)
	Flip Mirror Images	Vertical / Horizontal
	Light Frequency	50Hz, 60Hz or Outdoor
	Video Parameters	Brightness, Contrast
Communication	Ethernet	One 10/100Mbps RJ-45
	Supported Protocol	HTTP,FTP,TCP/IP,UDP,SMTP,DHCP,PPPoE,DDNS,UPnP,GPRS
	Wireless Standard	IEEE 802.11b/g
	Data Rate	802.11b: 11Mbps(Max.) 802.11g: 54Mbps(Max.)
	Wireless Security	WEP & WPA & WPA2 Encryption
	Infrared Light(03)	18 IR LEDs, Night visibility up to 10 meters
	Infrared Light(04)	24 IR LEDs, Night visibility up to 20 meters
	Infrared Light(05)	60 IR LEDs, Night visibility up to 30 meters
	Dimension(03)	135(L) x65(W) x65mm(H)
	Dimension(04)	140(L) x75(W) x80mm(H)
	Dimension(05)	245(L)X196(W)X112(H)mm.
	Gross Weight(03)	1020 g(carton box package)
	Gross Weight(04)	1150 g(carton box package)
	Gross Weight(05)	1320 g(carton box package)
	Net Weight(03)	910g (accessories included)
	Net Weight (04)	1000g (accessories included)
	Net Weight (05)	1180g (accessories included)
Power	Power Supply	DC 5V/2.0A (EU,US,AU adapter or other types optional)
	Power Consumption	5.5 Watts (Max.)
Environment	Operate Temper.	0° ~ 55°C (32°F ~ 131°F)
	Operating Humidity	20% ~ 85% non-condensing
	Storage Temper.	-10°C ~ 60° (14°F ~ 140°F)
	Storage Humidity	0% ~ 90% non-condensing
PC Requirements	CPU	2.0GHZ or above
	Memory Size	256MB or above
	Display Card	64M or above
	Supported OS	Microsoft Windows 2000/XP/Vista/Windows7/mac
	Browser	IE 6.0, IE7.0, IE8.0 firefox,google chrome,safari or other standard browsers
Certification	CE,FCC	
Warranty	Limited 1-year warranty	

5 OBTAINING TECHNICAL SUPPORT

While we hope your experience with the IPCAM network camera is enjoyable and easy to use, you may experience some issues or have questions that this User's Guide has not answered. Please contact your reseller and ask for help first, if they could not resolve your issue, please contact our company.

